

# TEXOMA FIVE DEPARTURE

REGIONAL DEP CON  
125.2 343.65  
CTAF  
122.7

**TOP ALTITUDE:  
ASSIGNED BY ATC**

TULSA  
114.4 TUL  
Chan 91

RADAR and DME required.

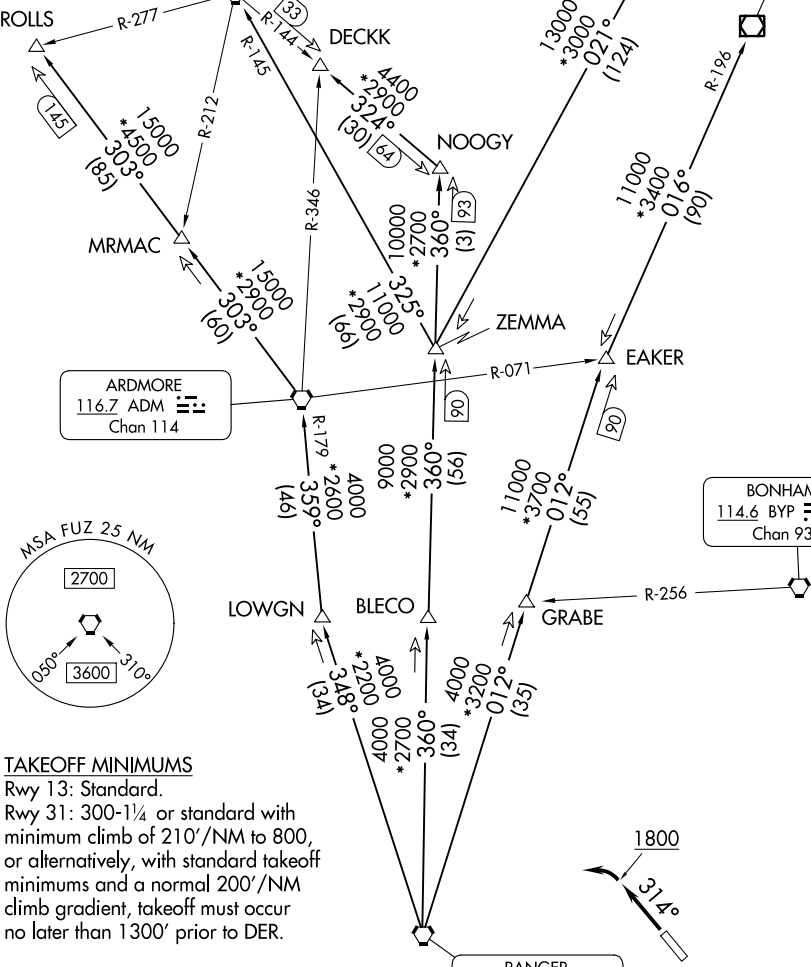
WILL ROGERS  
114.1 IRW  
Chan 88

OKMULGEE  
114.9 OKM  
Chan 96

ARDMORE  
116.7 ADM  
Chan 114

BONHAM  
114.6 BYP  
Chan 93

RANGER  
115.7 FUZ  
Chan 104



SC-2, 22 FEB 2024 to 21 MAR 2024

SC-2, 22 FEB 2024 to 21 MAR 2024

### TAKEOFF MINIMUMS

Rwy 13: Standard.  
Rwy 31: 300-1/4 or standard with minimum climb of 210'/NM to 800, or alternatively, with standard takeoff minimums and a normal 200'/NM climb gradient, takeoff must occur no later than 1300' prior to DER.

NOTE: Chart not to scale.

(CONTINUED ON FOLLOWING PAGE)

# TEXOMA FIVE DEPARTURE