

NDB FWC 257	APP CRS 085°	Rwy Idg TDZE Apt Elev	4000 434 434
-----------------------	------------------------	-----------------------------	---

NDB RWY 9

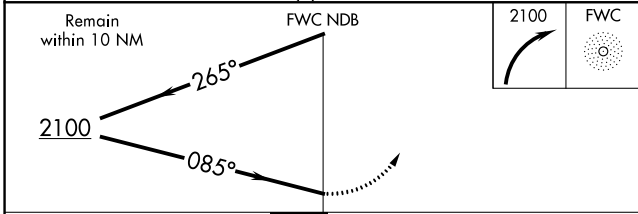
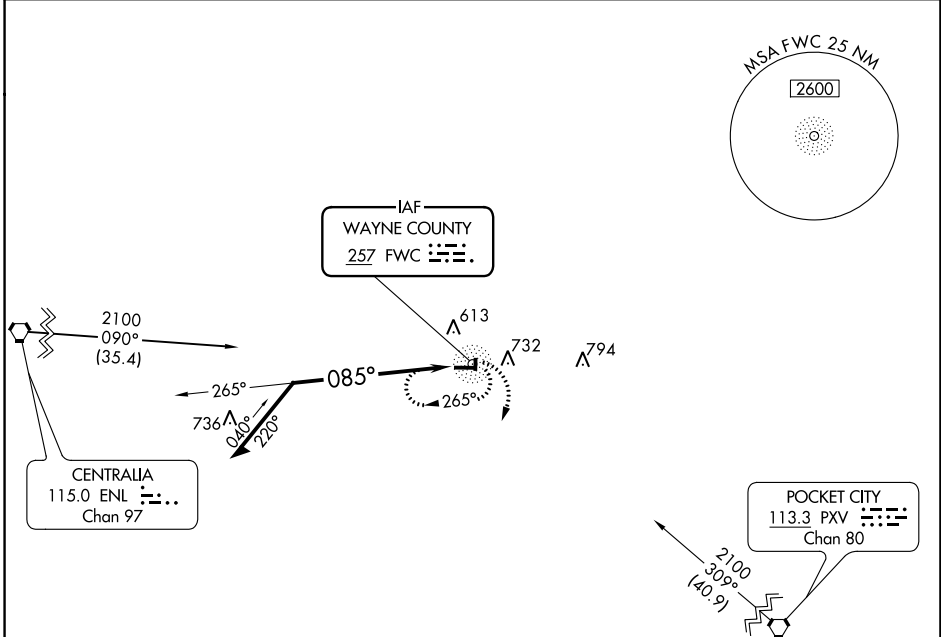
FAIRFIELD MUNI (FWC)

ADF required.

⚠ Rwy 9 helicopter visibility reduction below 1 SM NA.
⚠ Straight-in Rwy 9 NA at night, Circling Rwy 9, 27, 36 NA at night.

MISSED APPROACH: Climbing right turn to 2100 in FWC NDB holding pattern.

AWOS-3 119.425	KANSAS CITY CENTER 127.7 351.825	UNICOM 123.05 (CTAF)
--------------------------	--	--------------------------------



CATEGORY	A	B	C	D
S-9	1100-1	666 (700-1)	1100-1¼ 666 (700-1¼)	NA
C CIRCLING	1100-1	666 (700-1)	1100-1¼ 666 (700-1¼)	NA

ELEV 434	TDZE 434
----------	----------

REIL Rwy 9 **Ⓛ**
MIRL Rwy 9-27 and 18-36 **Ⓛ**

EC-3, 22 FEB 2024 to 21 MAR 2024

EC-3, 22 FEB 2024 to 21 MAR 2024