

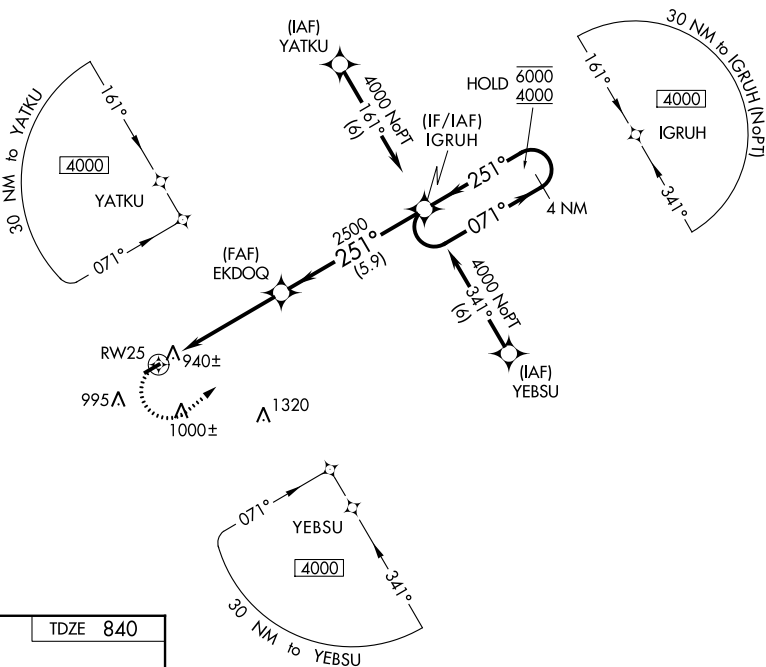
WAAS CH <b>40233</b> <b>W25A</b>	APP CRS <b>251°</b>	Rwy Idg TDZE Apt Elev	<b>3268</b> <b>840</b> <b>840</b>
--	------------------------	-----------------------------	---

# RNAV (GPS) RWY 25

AKRON/JESSON FLD (9G3)

RNP APCH.	MISSED APPROACH: Climbing left turn to 4000 direct IGRUH and hold, continue climb-in-hold to 4000.
<p>▼ Rwy 25 helicopter visibility reduction below 1 SM NA.</p> <p>▲ NA Use Buffalo altimeter setting. Procedure NA at night.</p>	

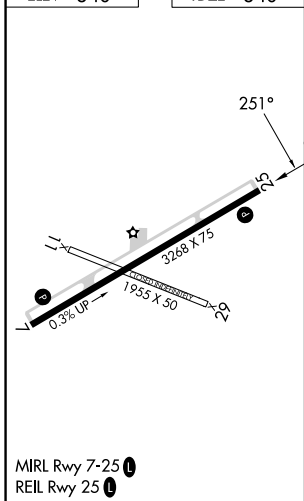
BUF ASOS <b>135.35</b>	BUFFALO APP CON <b>126.15 263.125</b>	UNICOM <b>122.725 (CTAF)</b>
---------------------------	--	---------------------------------



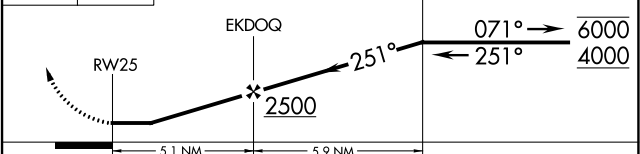
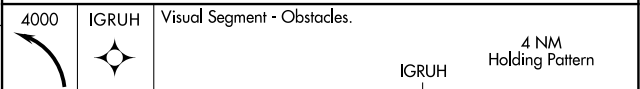
NE-2, 22 FEB 2024 to 21 MAR 2024

NE-2, 22 FEB 2024 to 21 MAR 2024

ELEV 840	TDZE 840
----------	----------



▲ 2448



CATEGORY	A	B	C	D
LP MDA	1240-1	400 (400-1)		NA
LNAV MDA	1300-1	460 (500-1)		NA
<b>C</b> CIRCLING	1380-1	540 (600-1)		NA