

WAAS CH 78228 W07A	APP CRS 071°	Rwy Idg TDZE Apt Elev	5001 775 781
--	------------------------	-----------------------------	---

RNAV (GPS) RWY 7

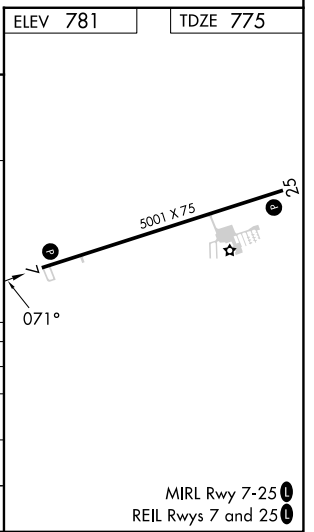
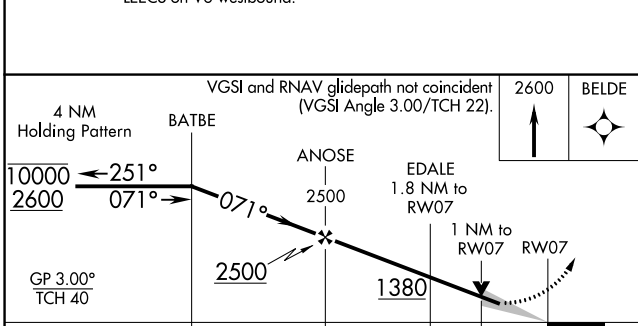
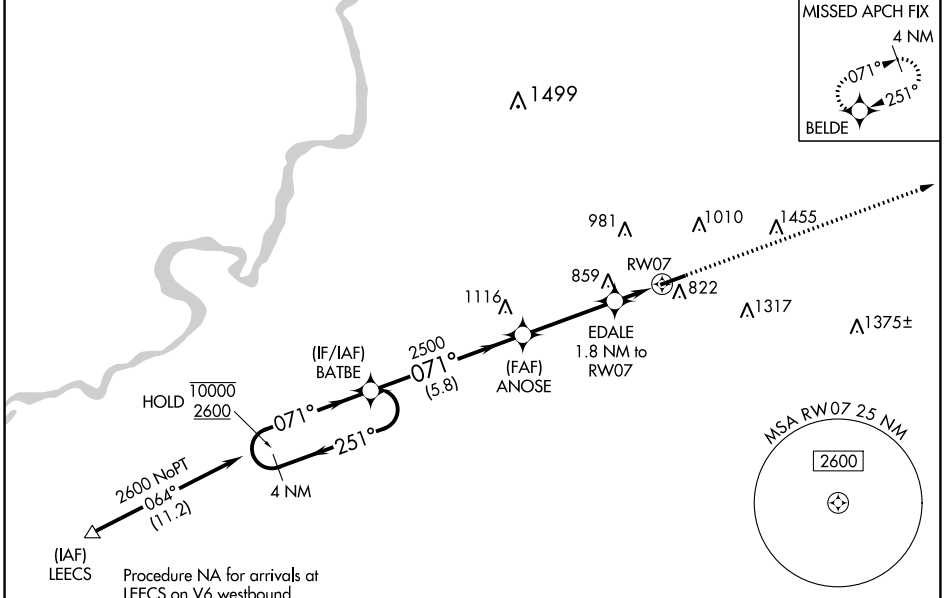
ROCHELLE MUNI/KORITZ FLD (R.P.J)

RNP APCH - GPS.

⚠ Baro-VNAV NA when using Chicago/Rockford Intl altimeter setting. For uncompensated Baro-VNAV systems, procedure NA below -17°C or above 54°C. VDP NA when using Chicago/Rockford Intl altimeter setting. When local altimeter setting not received, use Chicago/Rockford Intl altimeter setting: increase all DA to 1073 feet and all MDA 60 feet; increase LNAV visibility Cats C/D 1/8 mile; increase Circling Cat C visibility 1/4 mile.

MISSED APPROACH:
Climb to 2600 direct BELDE and hold.

AWOS-3 125.2	ROCKFORD APP CON 126.0 327.0	UNICOM 122.975 (CTAF) 0
------------------------	--	-----------------------------------



CATEGORY	A	B	C	D
LPV DA		1025-1	250 (300-1)	
LNAV/VNAV DA		1025-1	250 (300-1)	
LNAV MDA		1120-1	345 (400-1)	
CIRCLING	1260-1 479 (500-1)	1360-1 579 (600-1)	1680-2 ³ / ₄ 899 (900-2 ³ / ₄)	1820-3 1039 (1100-3)

EC-3, 22 FEB 2024 to 21 MAR 2024

EC-3, 22 FEB 2024 to 21 MAR 2024