

VOR/DME BSV 114.05 Chan 87 (Y)	APP CRS 127°	Rwy Idg TDZE Apt Elev 1164	N/A N/A 1164
--	------------------------	---	---

VOR-A

CARROLL COUNTY-TOLSON (T50)

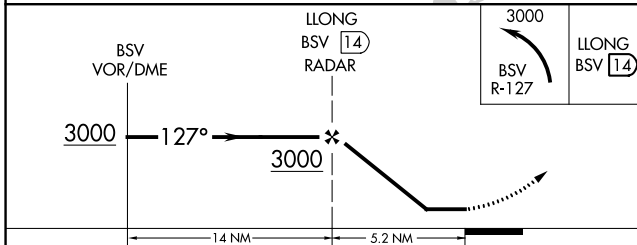
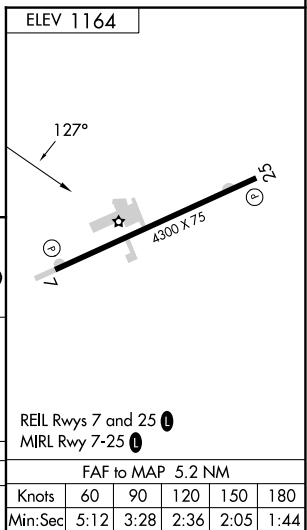
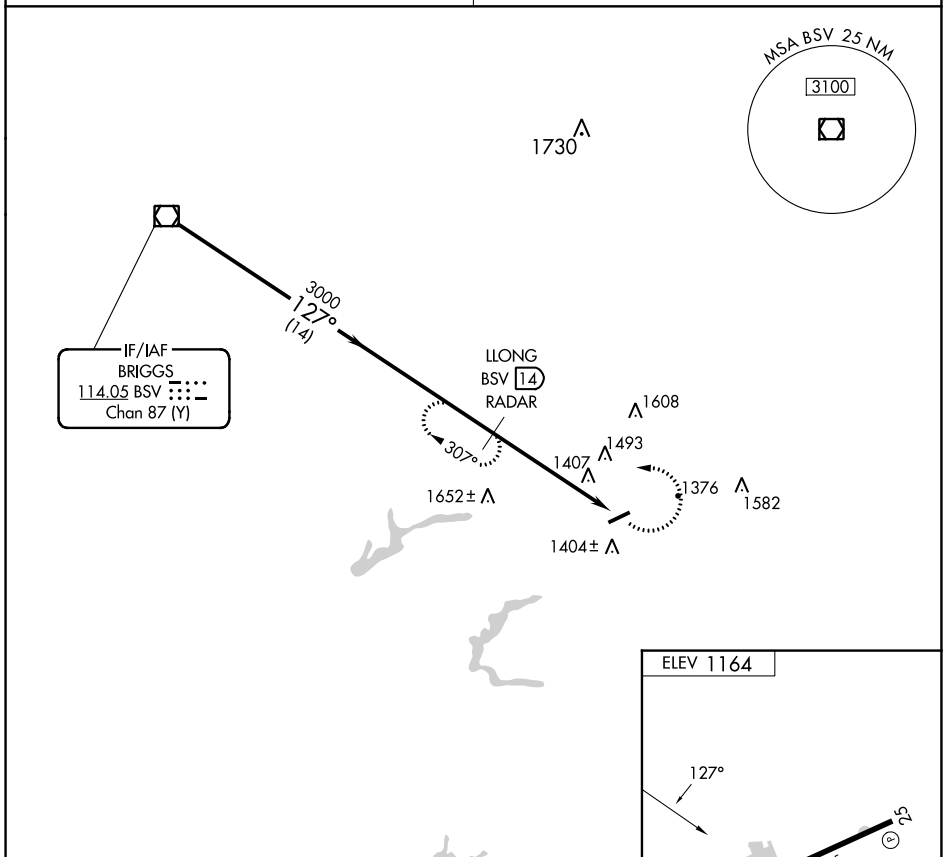
DME or RADAR required.

Procedure NA at night. Use Akron-Canton altimeter setting; when not received, use New Philadelphia altimeter setting and increase MDA 20 feet.

MISSED APPROACH: Climbing left turn to 3000 on BSV VOR/DME R-127 to LLONG/BSV 14 DME/RADAR and hold.

CLEVELAND APP CON ★
125.5 371.875

UNICOM
122.7 (CTAF) **1**



CATEGORY	A	B	C	D	FAF to MAP 5.2 NM					
CIRCLING	1940-1	777 (800-1)	NA		Knots	60	90	120	150	180
					Min:Sec	5:12	3:28	2:36	2:05	1:44

VOR-A

EC-2, 22 FEB 2024 to 21 MAR 2024

EC-2, 22 FEB 2024 to 21 MAR 2024