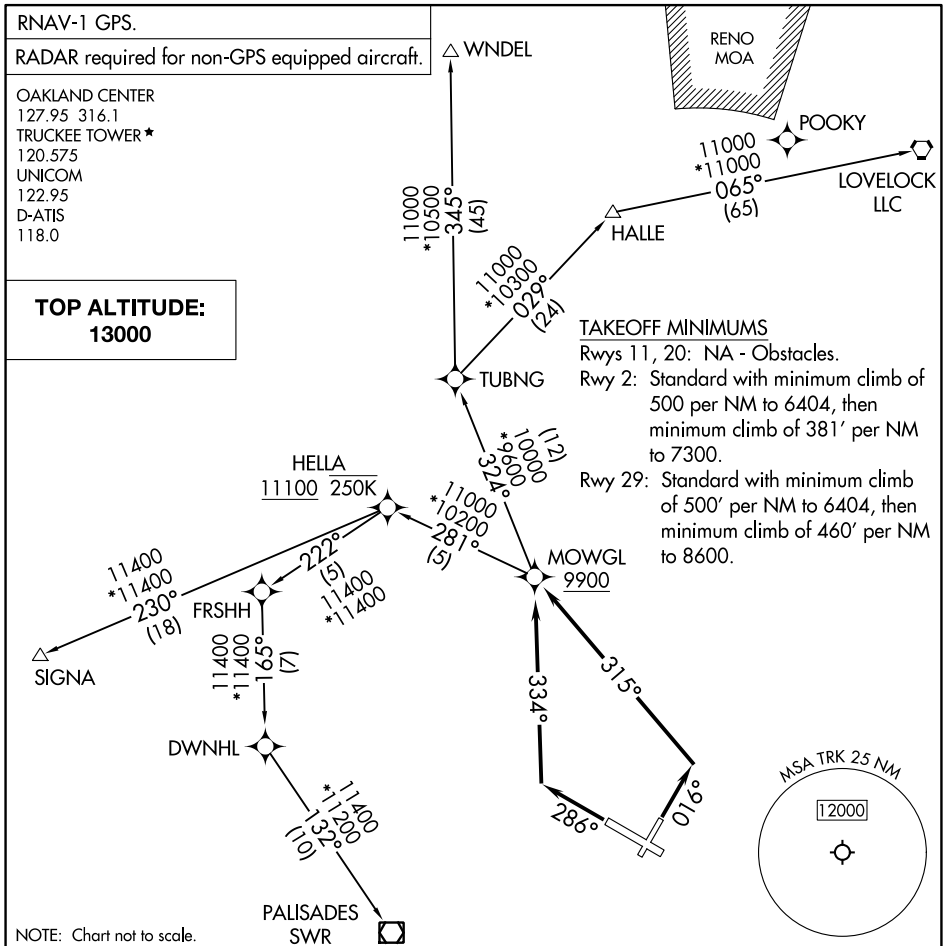


MOWGL TWO DEPARTURE (RNAV)

AL-6021 (FAA)

TRUCKEE-TAHOE (TRK)
TRUCKEE, CALIFORNIA



SW-2, 22 FEB 2024 to 21 MAR 2024

SW-2, 22 FEB 2024 to 21 MAR 2024

DEPARTURE ROUTE DESCRIPTION

TAKEOFF RUNWAY 2: Climb on heading 016° to intercept course 315° to cross MOWGL at or above 9900, thence. . . .

TAKEOFF RUNWAY 29: Climb on heading 286° to intercept course 334° to cross MOWGL at or above 9900, thence. . . .

. . . .(transition) maintain 13000 expect filed altitude 10 minutes after departure.

- HALLE TRANSITION (MOWGL2.HALLE)
- LOVELOCK TRANSITION (MOWGL2.LLC)
- PALISADES TRANSITION (MOWGL2.SWR)
- SIGNA TRANSITION (MOWGL2.SIGNA)
- WNDL TRANSITION (MOWGL2.WNDL)