

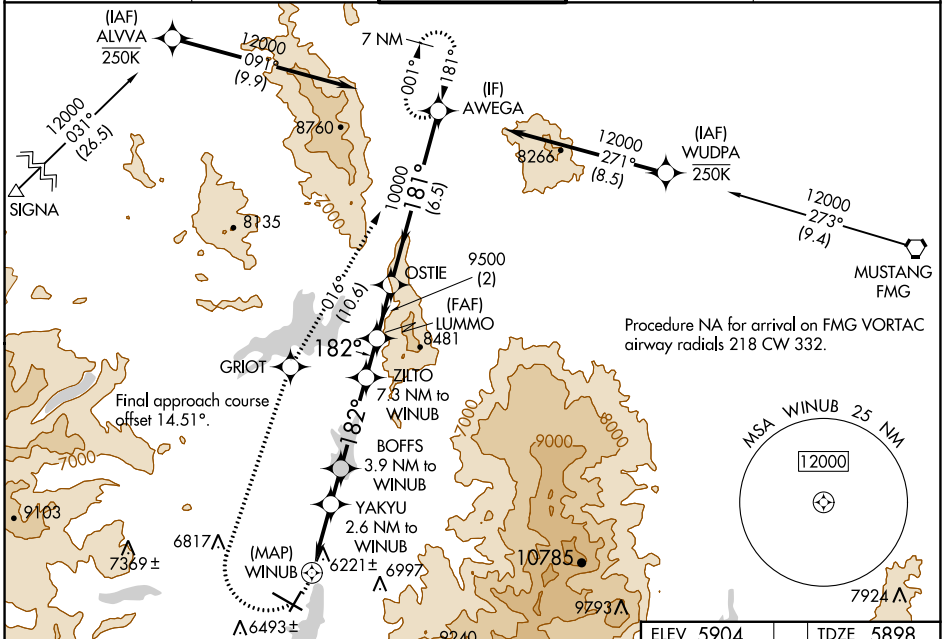
WAAS CH 87135 W20A	APP CRS 182°	Rwy Idg TDZE Apt Elev	4539 5898 5904
--	------------------------	-----------------------------	---

RNAV (GPS) RWY 20

TRUCKEE-TAHOE (TRK)

RNP APCH.	MISSED APPROACH: (Do not exceed 200K until GRIOT) Climbing right turn to 12000 direct GRIOT and on track 016° to AWEGA and hold, continue climb-in-hold to 12000. *Missed approach requires minimum climb of 270 feet per NM to 7700.
<p>⚠ Circling to Rwy 2, 11, 29 NA at night. Circling NA for Cat C south of Rwy 29 and east of Rwy 2. Rwy 20 helicopter visibility reduction below ¾ SM NA. When local altimeter setting not received, procedure NA.</p> <p>❄ -18°C</p>	

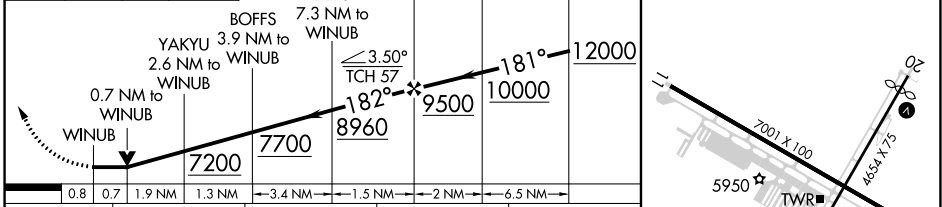
D-ATIS 118.0	OAKLAND CENTER 127.95 316.1	TRUCKEE TOWER * 120.575 (CTAF) 0	GND CON 118.3	UNICOM 122.95
------------------------	---------------------------------------	--	-------------------------	-------------------------



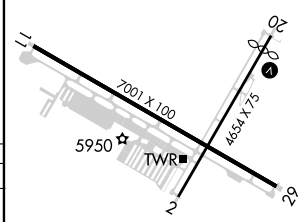
SW-2, 22 FEB 2024 to 21 MAR 2024

SW-2, 22 FEB 2024 to 21 MAR 2024

12000 GRIOT	AWEGA	VGSI and descent angles not coincident (VGSI Angle 3.50/TCH 25).
181°		



CATEGORY	A	B	C	D
LP MDA*	6480-1	582 (600-1)	6480-1¼ 582 (600-1¼)	NA
LP MDA	6780-1¼	882 (900-1¼)	6780-2½ 882 (900-2½)	NA
LNAV MDA	7120-1¼ 1222 (1300-1¼)	7120-1½ 1222 (1300-1½)	7120-3 1222 (1300-3)	NA
C CIRCLING	7120-1¼ 1216 (1300-1¼)	7220-1½ 1316 (1400-1½)	7700-3 1796 (1800-3)	NA



REIL Rwy 11 **0**
MIRL Rwy 11-29 and 2-20 **0**