

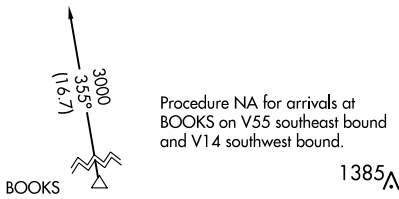
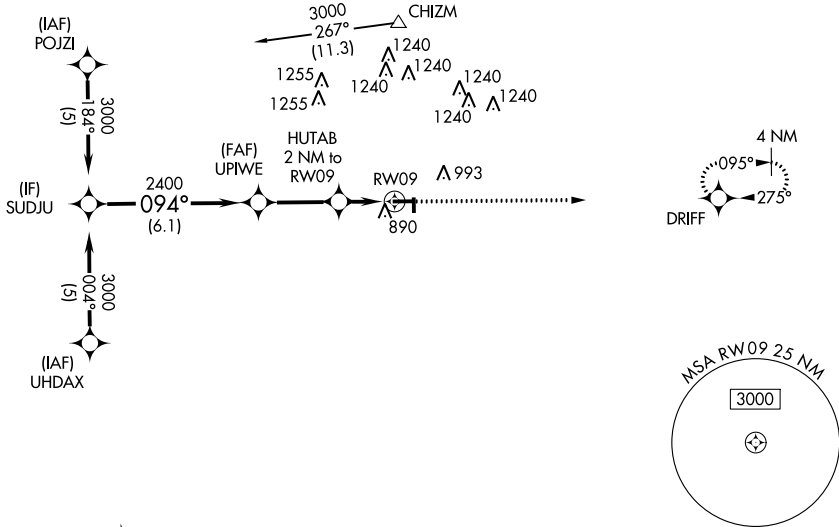
APP CRS	Rwy Idg	<b>4000</b>
<b>094°</b>	TDZE	<b>784</b>
	Apt Elev	<b>787</b>

# RNAV (GPS) RWY 9

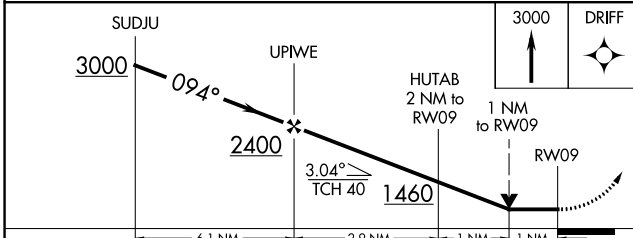
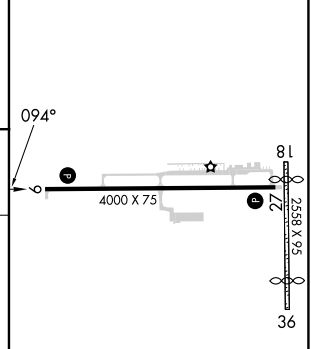
VAN WERT COUNTY (VNW)

RNP APCH - GPS.		MISSED APPROACH: Climb to 3000 direct DRIFT and hold.
AWOS-3 <b>125.175</b>	FORT WAYNE APP CON <b>127.2 284.6</b>	UNICOM <b>123.0 (CTAF) 0</b>

Procedure NA for arrivals at CHIZM on V38 eastbound.



ELEV	787	TDZE	784
------	-----	------	-----



CATEGORY	A	B	C	D
LNAV MDA	1160-1 376 (400-1)		1160-1¼ 376 (400-1¼)	
CIRCLING	1340-1 553 (600-1)		1340-1½ 553 (600-1½)	1600-2¾ 813 (900-2¾)

MIRL Rwy 9-27 0  
REIL Rwy 9 and 27 0

EC-2, 22 FEB 2024 to 21 MAR 2024

EC-2, 22 FEB 2024 to 21 MAR 2024