

AKUNA NINE DEPARTURE (RNAV)

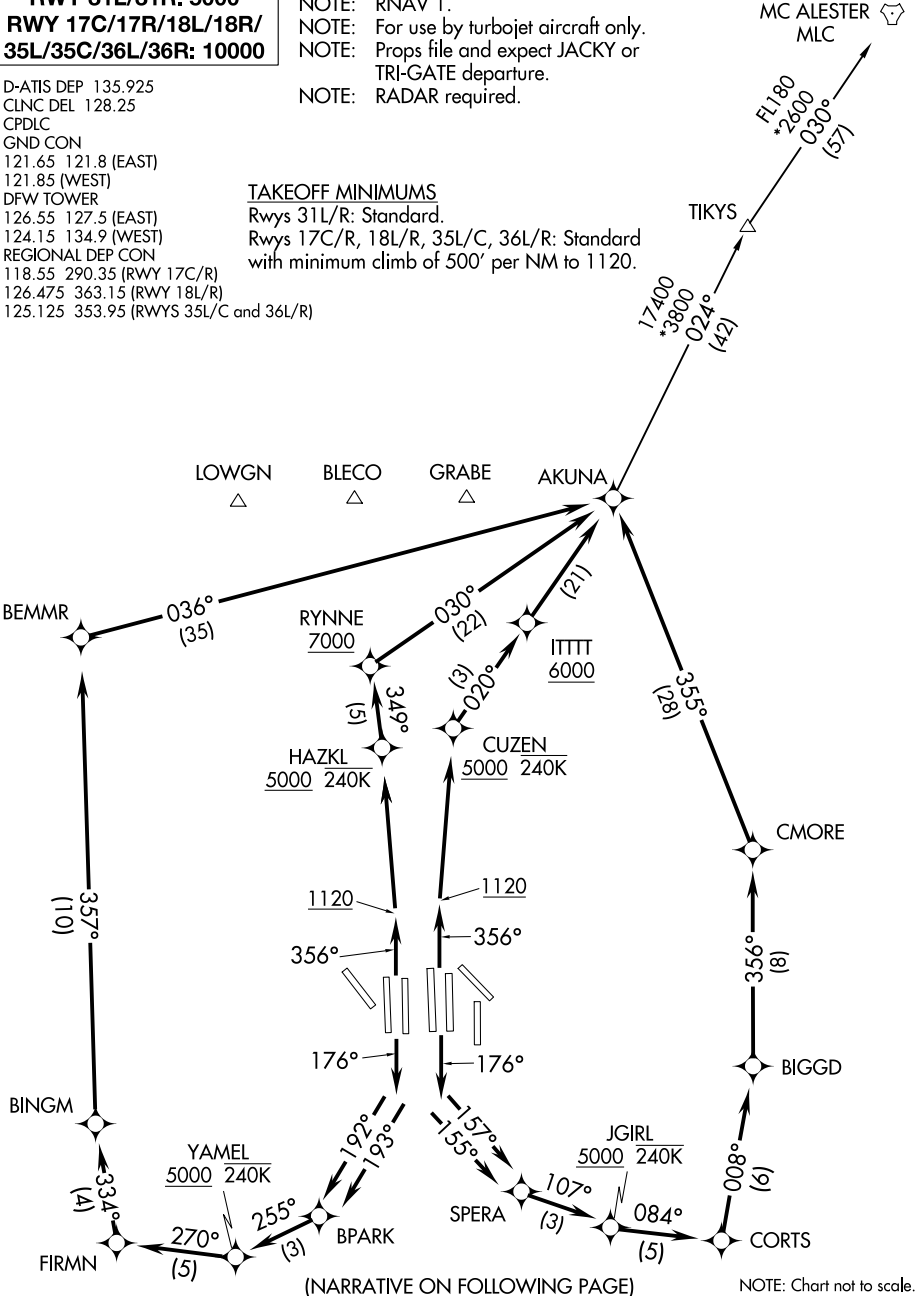
TOP ALTITUDE:
RWY 31L/31R: 5000
**RWY 17C/17R/18L/18R/
35L/35C/36L/36R: 10000**

- NOTE: DME/DME/IRU or GPS required.
- NOTE: RNAV 1.
- NOTE: For use by turbojet aircraft only.
- NOTE: Props file and expect JACKY or TRI-GATE departure.
- NOTE: RADAR required.

D-ATIS DEP 135.925
 CLNC DEL 128.25
 CPDLC
 GND CON
 121.65 121.8 (EAST)
 121.85 (WEST)
 DFW TOWER
 126.55 127.5 (EAST)
 124.15 134.9 (WEST)
 REGIONAL DEP CON
 118.55 290.35 (RWY 17C/R)
 126.475 363.15 (RWY 18L/R)
 125.125 353.95 (RWYS 35L/C and 36L/R)

TAKEOFF MINIMUMS

Rwys 31L/R: Standard.
 Rwys 17C/R, 18L/R, 35L/C, 36L/R: Standard
 with minimum climb of 500' per NM to 1120.



(NARRATIVE ON FOLLOWING PAGE)

NOTE: Chart not to scale.

SC-2, 22 FEB 2024 to 21 MAR 2024

SC-2, 22 FEB 2024 to 21 MAR 2024

AKUNA NINE DEPARTURE (RNAV)