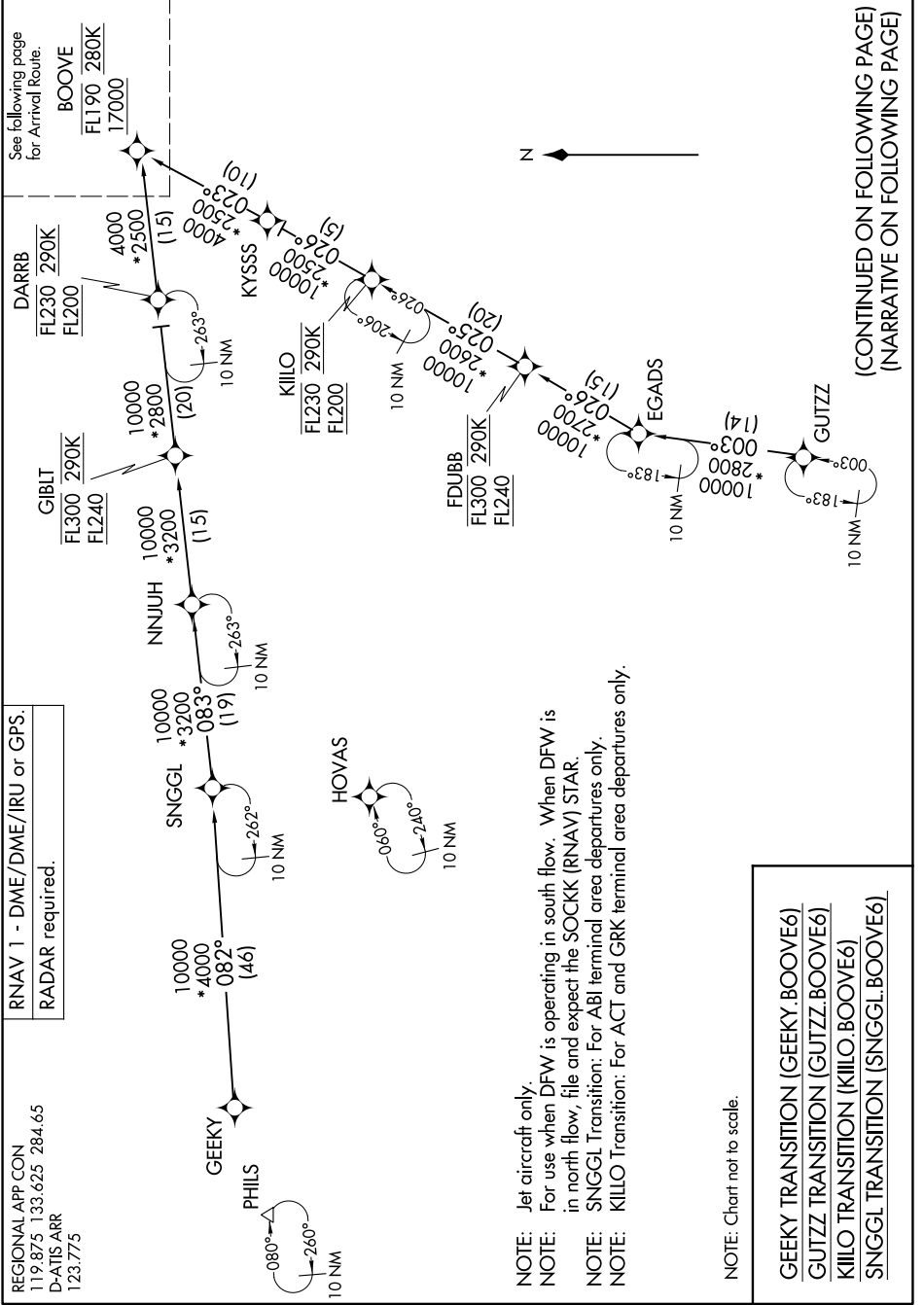


BOOVE SIX ARRIVAL (RNAV) Transition Routes

SC-2, 22 FEB 2024 to 21 MAR 2024



RNAV 1 - DME/DME/IRU or GPS. RADAR required.

REGIONAL APP CON 119.875 133.625 284.65 D-ATIS ARR 123.775

- NOTE: Jet aircraft only.
- NOTE: For use when DFW is operating in south flow. When DFW is in north flow, file and expect the SOCKK (RNAV) STAR.
- NOTE: SNGGL Transition: For ABI terminal area departures only.
- NOTE: KILLLO Transition: For ACT and GRK terminal area departures only.

NOTE: Chart not to scale.

GEEKY TRANSITION (GEEKY.BOOVE6)
GUTZZ TRANSITION (GUTZZ.BOOVE6)
KILLLO TRANSITION (KILLLO.BOOVE6)
SNGGL TRANSITION (SNGGL.BOOVE6)

(CONTINUED ON FOLLOWING PAGE)
(NARRATIVE ON FOLLOWING PAGE)

BOOVE SIX ARRIVAL (RNAV) Transition Routes

SC-2, 22 FEB 2024 to 21 MAR 2024