

(BOOVE.BOOVE6) 23054

AL-6039 (FAA)

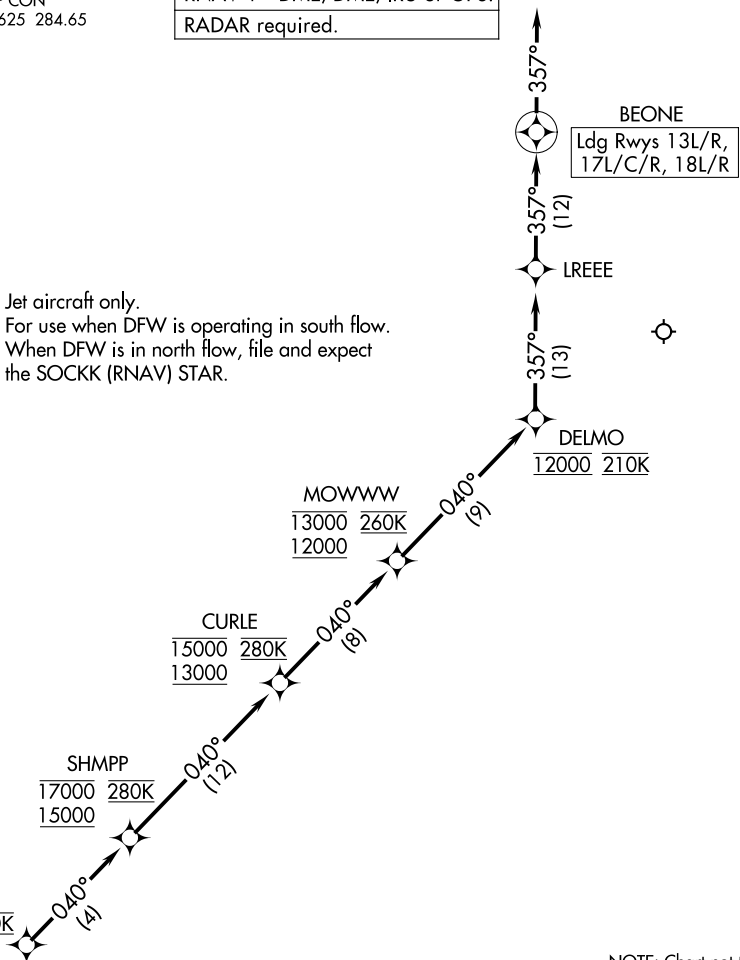
DALLAS-FORT WORTH INTL (DFW)
DALLAS-FORT WORTH, TEXAS

BOOVE SIX ARRIVAL (RNAV) Arrival Route

REGIONAL APP CON
119.875 133.625 284.65
D-ATIS ARR
123.775

RNAV 1 - DME/DME/IRU or GPS.
RADAR required.

NOTE: Jet aircraft only.
NOTE: For use when DFW is operating in south flow.
When DFW is in north flow, file and expect the SOCKK (RNAV) STAR.



NOTE: Chart not to scale.

ARRIVAL ROUTE DESCRIPTION

From BOOVE on track 040° to cross SHMPP between 15000 and 17000 and at 280K, then on track 040° to cross CURLE between 13000 and 15000 and at 280K, then on track 040° to cross MOWWW between 12000 and 13000 and at 260K, then on track 040° to cross DELMO at 12000 and at 210K, then on track 357° to LREEE, then on track 357° to BEONE, then on track 357°. Expect RADAR vectors to final approach course.

SC-2, 22 FEB 2024 to 21 MAR 2024

SC-2, 22 FEB 2024 to 21 MAR 2024

BOOVE SIX ARRIVAL (RNAV) Arrival Route

(BOOVE.BOOVE6) 23FEB23

DALLAS-FORT WORTH, TEXAS
DALLAS-FORT WORTH INTL (DFW)