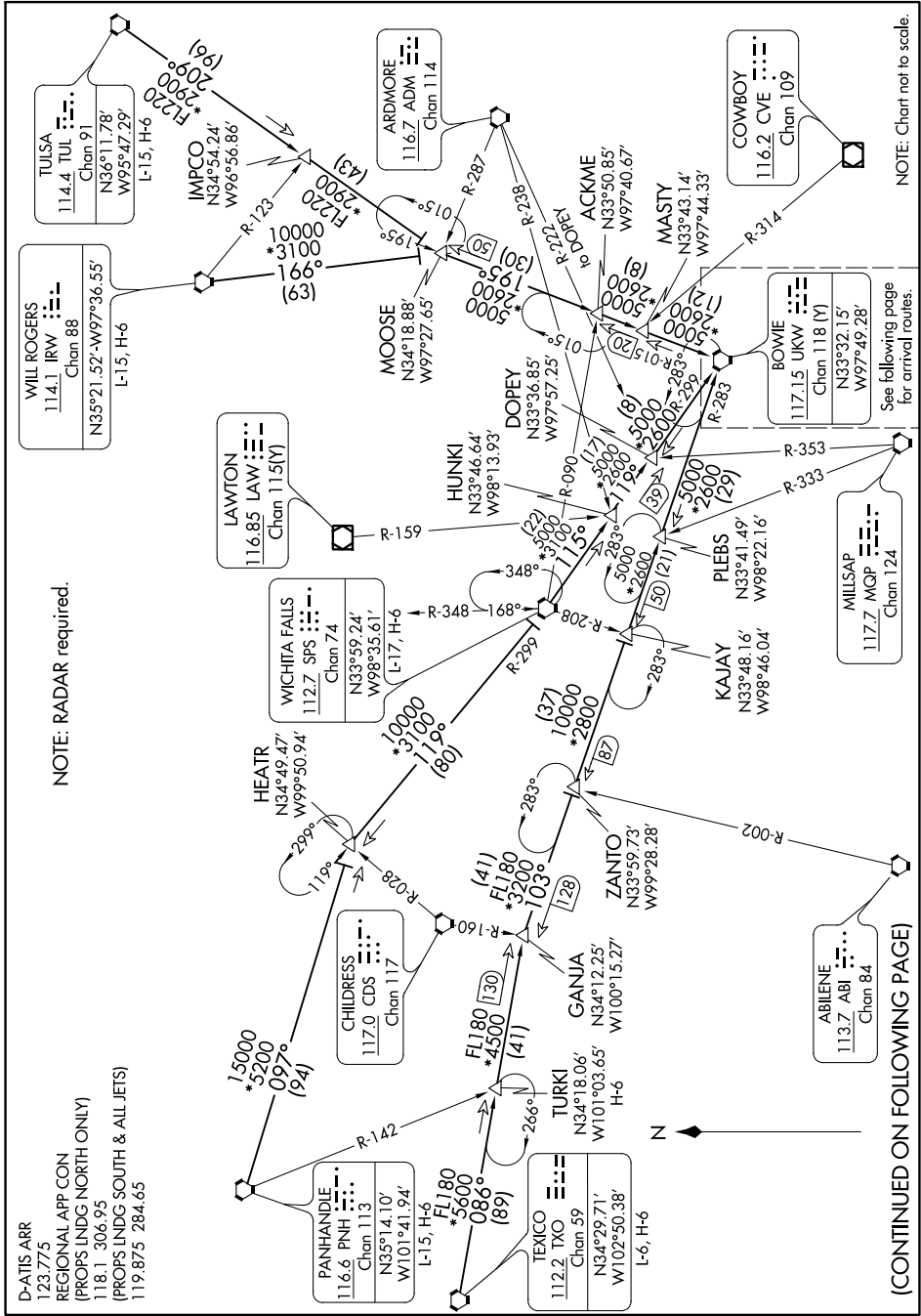


BOWIE SEVEN ARRIVAL

Transition Routes

DALLAS-FORT WORTH, TEXAS

SC-2, 22 FEB 2024 to 21 MAR 2024



NOTE: RADAR required.

NOTE: Chart not to scale.

See following page for arrival routes.

(CONTINUED ON FOLLOWING PAGE)

BOWIE SEVEN ARRIVAL

Transition Routes

DALLAS-FORT WORTH, TEXAS

SC-2, 22 FEB 2024 to 21 MAR 2024

D-ATIS ARR
123.775
REGIONAL APP CON
(PROPS INDG NORTH ONLY)
118.1 306.95
(PROPS INDG SOUTH & ALL JETS)
119.875 284.65

PANHANDLE
116.6 PNH
Chan 113
N35°14.10'
W101°41.94'
L-15, H-6

TEXICO
112.2 TXO
Chan 59
N34°29.71'
W102°50.38'
L-6, H-6

TURKI
N34°18.06'
W101°03.65'
N34°12.25'
W100°15.27'
H-6

GANJA
N34°18.06'
W101°03.65'
N34°12.25'
W100°15.27'
H-6

ZANTIO
N33°59.73'
W99°28.28'

PLEBS
N33°41.49'
W98°22.16'

KAJAY
N33°48.16'
W98°46.04'

MILLSAP
117.7 MGP
Chan 124

BOWIE
117.15 UKW
Chan 118 (Y)

MOOSE
N34°18.88'
W97°27.65'

ARDMORE
116.7 ADM
Chan 114

ACKME
N33°50.85'
W97°40.67'

MASTY
N33°43.14'
W97°44.33'

COWBOY
116.2 CVE
Chan 109

WILL ROGERS
114.1 IRW
Chan 88
N35°21.52'-W97°36.55'

LAWTON
116.85 LAW
Chan 115 (Y)

WICHITA FALLS
112.7 SFS
Chan 74
N33°59.24'
W98°35.61'

CHILDRESS
117.0 CDS
Chan 117

HEATHR
N34°49.47'
W99°50.94'

TULSA
114.4 TUL
Chan 91
N36°11.78'
W95°47.29'
L-15, H-6

IMPACO
N34°54.24'
W96°56.86'