

(SEEVR.BRDJE4) 23054

AL-6039 (FAA)

DALLAS-FORT WORTH INTL (DFW)

# BRDJE FOUR ARRIVAL (RNAV) Arrival Route

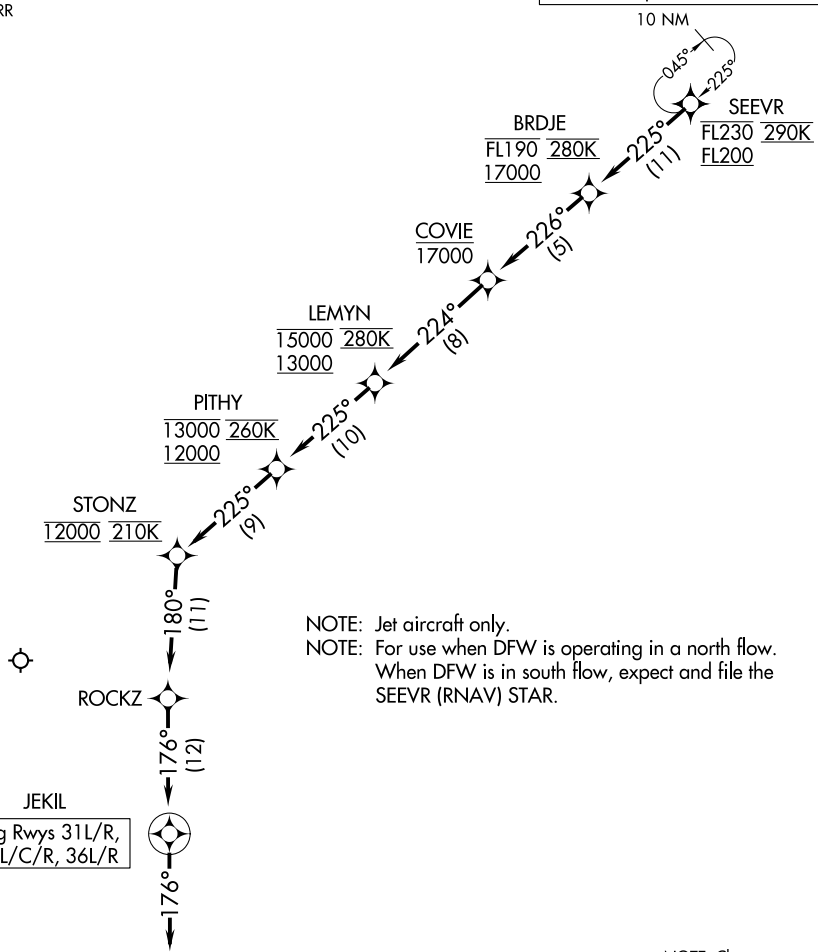
DALLAS-FORT WORTH, TEXAS

REGIONAL APP CON  
125.025 263.025  
D-ATIS ARR  
123.775

RNAV 1 - DME/DME/IRU or GPS.

RADAR required.

10 NM



NOTE: Jet aircraft only.  
 NOTE: For use when DFW is operating in a north flow.  
 When DFW is in south flow, expect and file the SEEVR (RNAV) STAR.

NOTE: Chart not to scale.

## ARRIVAL ROUTE DESCRIPTION

From SEEVR on track 225° to cross BRDJE between 17000 and FL190 and at 280K, then on track 226° to cross COVIE at or below 17000, then on track 224° to cross LEMYN between 13000 and 15000 and at 280K, then on track 225° to cross PITHY between 12000 and 13000 and at 260K, then on track 225° to cross STONZ at 12000 and at 210K, then on track 180° to ROCKZ, then on track 176° to JEKIL, then on track 176°. Expect RADAR vectors to final approach course.

# BRDJE FOUR ARRIVAL (RNAV) Arrival Route

(SEEVR.BRDJE4) 23FEB23

DALLAS-FORT WORTH, TEXAS  
DALLAS-FORT WORTH INTL (DFW)

SC-2, 22 FEB 2024 to 21 MAR 2024

SC-2, 22 FEB 2024 to 21 MAR 2024