

# CEDAR CREEK TWO ARRIVAL

## Arrival Routes

DALLAS-FORT WORTH, TEXAS

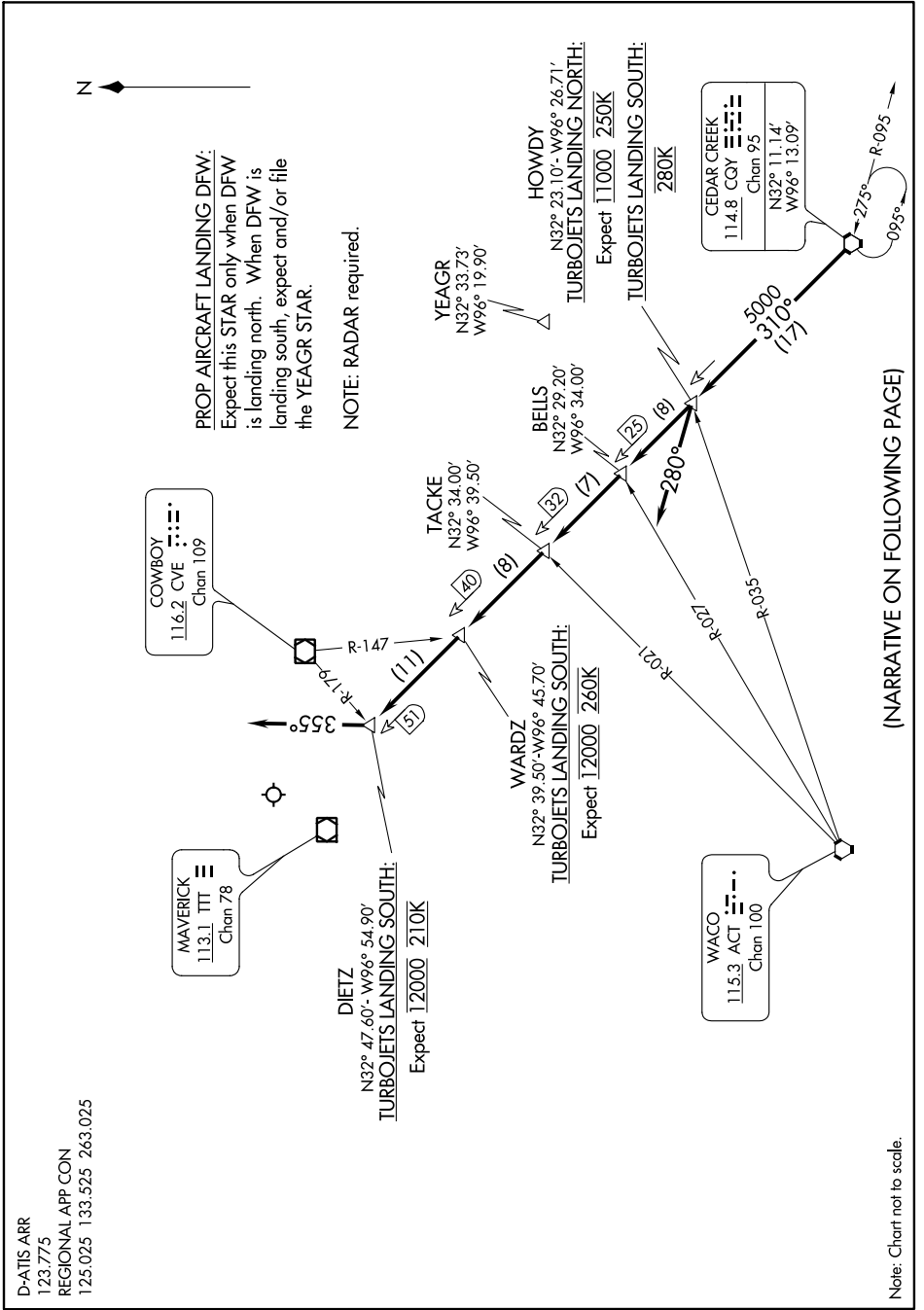
SC-2, 22 FEB 2024 to 21 MAR 2024

D-ATIS ARR  
123.775  
REGIONAL APP CON  
125.025 133.525 263.025

# CEDAR CREEK TWO ARRIVAL

## Arrival Routes

DALLAS-FORT WORTH, TEXAS



(NARRATIVE ON FOLLOWING PAGE)

Note: Chart not to scale.

SC-2, 22 FEB 2024 to 21 MAR 2024