

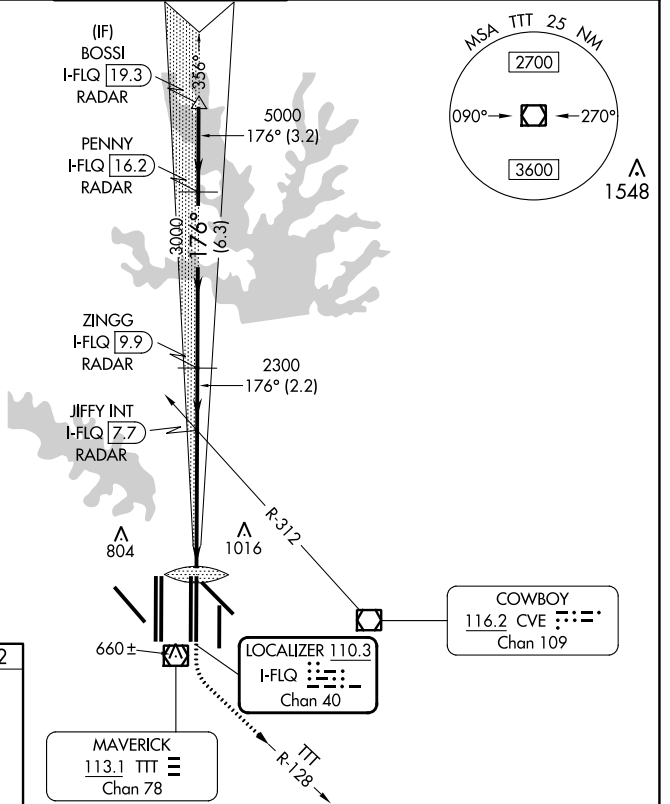
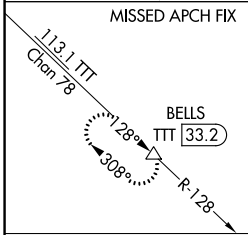
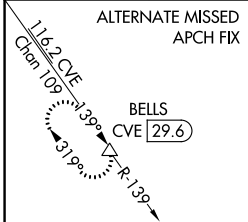
LOC/DME I-FLQ 110.3 Chan 40	APP CRS 176°	Rwy ldg 13400 TDZE 562 Apt Elev 607
---	------------------------	--

CONVERGING ILS RWY 17C

DALLAS-FORT WORTH INTL (DFW)

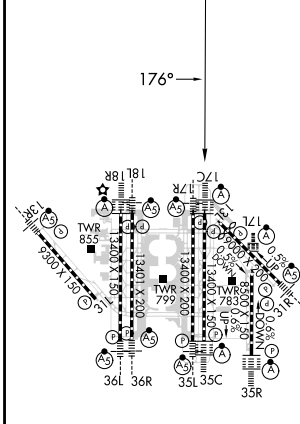
<p>▼ DME or RADAR required. Simultaneous approach authorized with Converging ILS Rwy 13R.</p>	<p>ALSF-2</p>	<p>MISSED APPROACH: Climb to 3000 then climbing left turn to 3000 on TTT VOR/DME R-128 to BELLS/TTT 33.2 DME and hold.</p>
--	---------------	--

D-ATIS ARR 123.775 DEP 135.925	REGIONAL APP CON 127.075	DFW TOWER 126.55 127.5 EAST 124.15 134.9 WEST	GND CON 121.65 121.8 EAST 121.85 WEST	CLNC DEL 128.25	CPDLC
--	------------------------------------	---	---	---------------------------	-------



RADAR REQUIRED

ELEV 607	D	TDZE 562
-----------------	----------	-----------------



1300	3000	BELLS	VGSJ and ILS glidepath not coincident (VGSJ Angle 3.00/TCH 74).
↑	TTT	R-128	
		JIFFY INT I-FLQ 7.7 RADAR	ZINGG I-FLQ 9.9 RADAR
		PENNY I-FLQ 16.2 RADAR	BOSSI I-FLQ 19.3 RADAR
IM	2300	3000	6000
654	2300	3000	5000
0.1	5.2 NM	2.2 NM	6.3 NM
0.1	5.2 NM	2.2 NM	6.3 NM
CATEGORY	A	B	C
S-ILS 17C	762/18 200 (200-1/2)		
			GS 3.00° TCH 58