


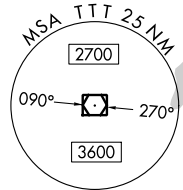
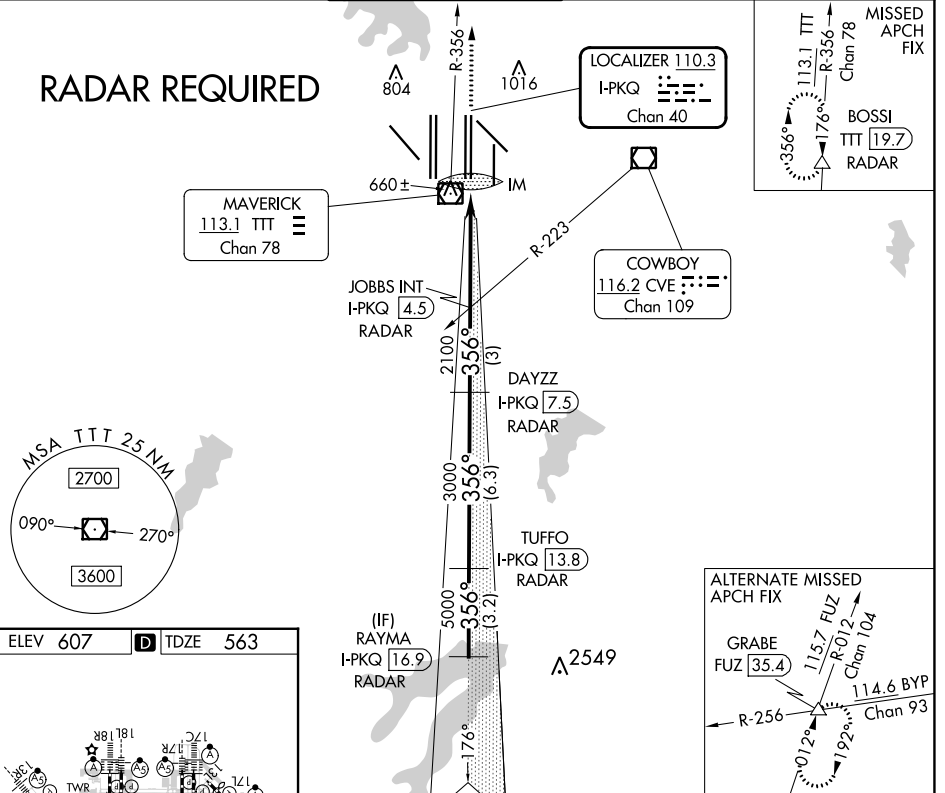
LOC/DME I-PKQ 110.3 Chan 40	APP CRS 356°	Rwy Idg TDZE Apt Elev	13400 563 607
--	------------------------	-----------------------------	--

CONVERGING ILS RWY 35C

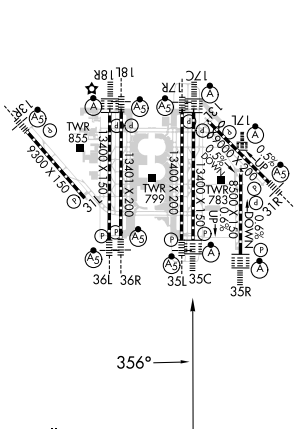
DALLAS-FORT WORTH INTL (DFW)

D-ATIS ARR 123.775 DEP 135.925	REGIONAL APP CON 127.075	DFW TOWER 126.55 127.5 EAST 124.15 134.9 WEST		GND CON 121.65 121.8 EAST 121.85 WEST		CLNC DEL 128.25	CPDLC
		<p>▼ DME or RADAR required. Simultaneous approach authorized with Converging ILS Rwy 31R.</p> <p>ALSF-2 </p> <p>MISSED APPROACH: Climb to 3000 on TTT VOR/DME R-356 to BOSSI/TTT 19.7 DME/RADAR and hold.</p>					

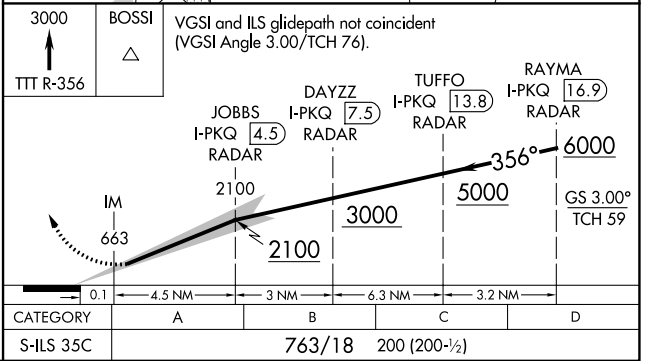
RADAR REQUIRED



ELEV 607	D TDZE 563
----------	-------------------



HIRL all Rwy
REIL Rwy 13L and 31L
TDZ/CL all Rwy except 13L and 31L



SC-2, 22 FEB 2024 to 21 MAR 2024

SC-2, 22 FEB 2024 to 21 MAR 2024