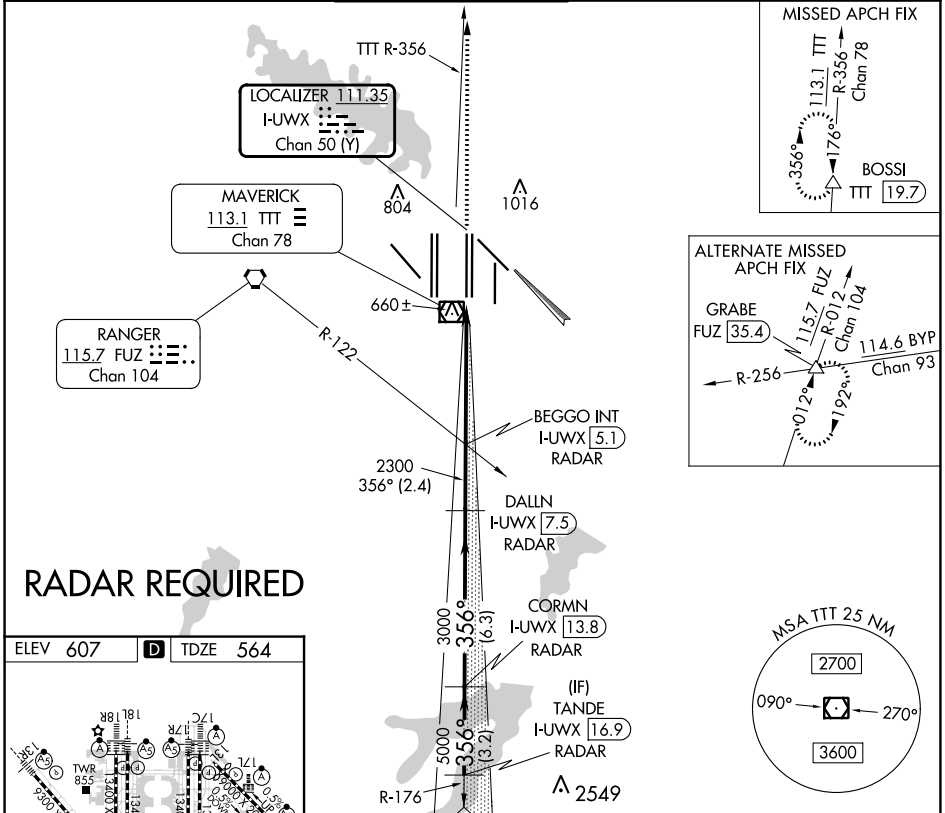


LOC/DME I-UWX 111.35 Chan 50 (Y)	APP CRS 356°	Rwy Idg 13400 TDZE 564 Apt Elev 607
--	------------------------	--

CONVERGING ILS RWY 35L

DALLAS-FORT WORTH INTL (DFW)

D-ATIS ARR 123.775 DEP 135.925	REGIONAL APP CON 127.075	DFW TOWER		GND CON 121.65 121.8 EAST 121.85 WEST	CLNC DEL 128.25	CPDLC
		126.55 127.5 EAST 124.15 134.9 WEST				



ELEV 607	D	TDZE 564
<p>HIRL all Rwys REIL Rws 13L and 31L TDZ/CL all Rws except 13L and 31L</p>		
<p>TANDE I-UWX 16.9 RADAR, CORMN I-UWX 13.8 RADAR, DALLN I-UWX 7.5 RADAR, BEGGO INT I-UWX 5.1 RADAR, (IF) TANDE I-UWX 16.9 RADAR, TTT R-356, BOSSI TTT 19.7</p> <p>356° glidepath, GS 3.00° TCH 47, 2000, 3000, 2300, 6000, 5000, 3000, 2300</p> <p>3.2 NM, 6.3 NM, 2.4 NM, 5.3 NM</p>		
CATEGORY	A	D
S-ILS 35L	764/18 200 (200-1/2)	

SC-2, 22 FEB 2024 to 21 MAR 2024

SC-2, 22 FEB 2024 to 21 MAR 2024