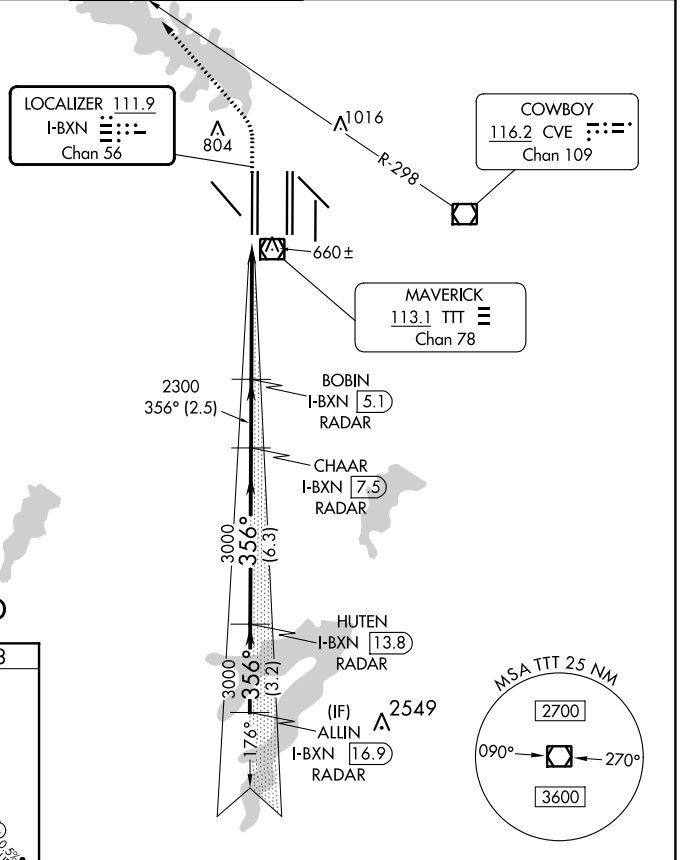
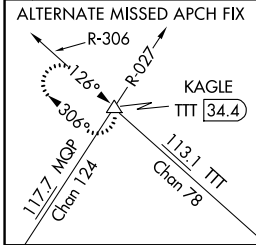
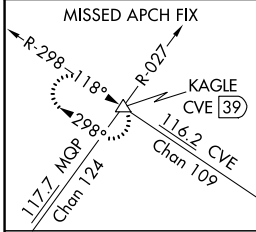


LOC/DME I-BXN 111.9 Chan 56	APP CRS 356°	Rwy Idg TDZE Apt Elev 13400 588 607
---	------------------------	---

CONVERGING ILS RWY 36L

DALLAS-FORT WORTH INTL (DFW)

▼ DME or RADAR required. Simultaneous approach authorized with CONVERGING ILS RWY 31R.		MALSR 	MISSED APPROACH: Climb to 1100 then climbing left turn to 3000 on heading 315° and CVE VOR/DME R-298 to KAGLE INT/CVE VOR/DME 39 DME and hold.			
D-ATIS ARR 123.775 DEP 135.925	REGIONAL APP CON 118.425	DFW TOWER 126.55 127.5 EAST 124.15 134.9 WEST		GND CON 121.65 121.8 EAST 121.85 WEST	CLNC DEL 128.25	CPDLC

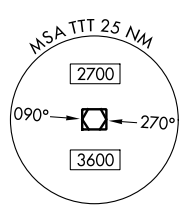


RADAR REQUIRED

ELEV 607	D	TDZE 588
-----------------	----------	-----------------

HIRL all Rwy 36L
REIL Rwy 31L and 31L
TDZ/CL all Rwy except 13L and 31L

1100	3000	CVE R-298	KAGLE	BOBIN I-BXN 5.1	CHAAR I-BXN 7.5	HUTEN I-BXN 13.8	ALLIN I-BXN 16.9
VGSI and ILS glidepath not coincident (VGSI Angle 3.00/TCH 72).				2300	3000	3000	4000
				5.2 NM	2.5 NM	6.3 NM	3.2 NM
CATEGORY				A	B	C	D
S-ILS 36L				788/18 200 (200-1/2)			



SC-2, 22 FEB 2024 to 21 MAR 2024

SC-2, 22 FEB 2024 to 21 MAR 2024

CONVERGING ILS RWY 36L