

(FORCK3.FORCK) 23334

DALLAS-FORT WORTH INTL (DFW)

FORCK THREE DEPARTURE (RNAV)

AL-6039 (FAA)

DALLAS-FORT WORTH, TEXAS

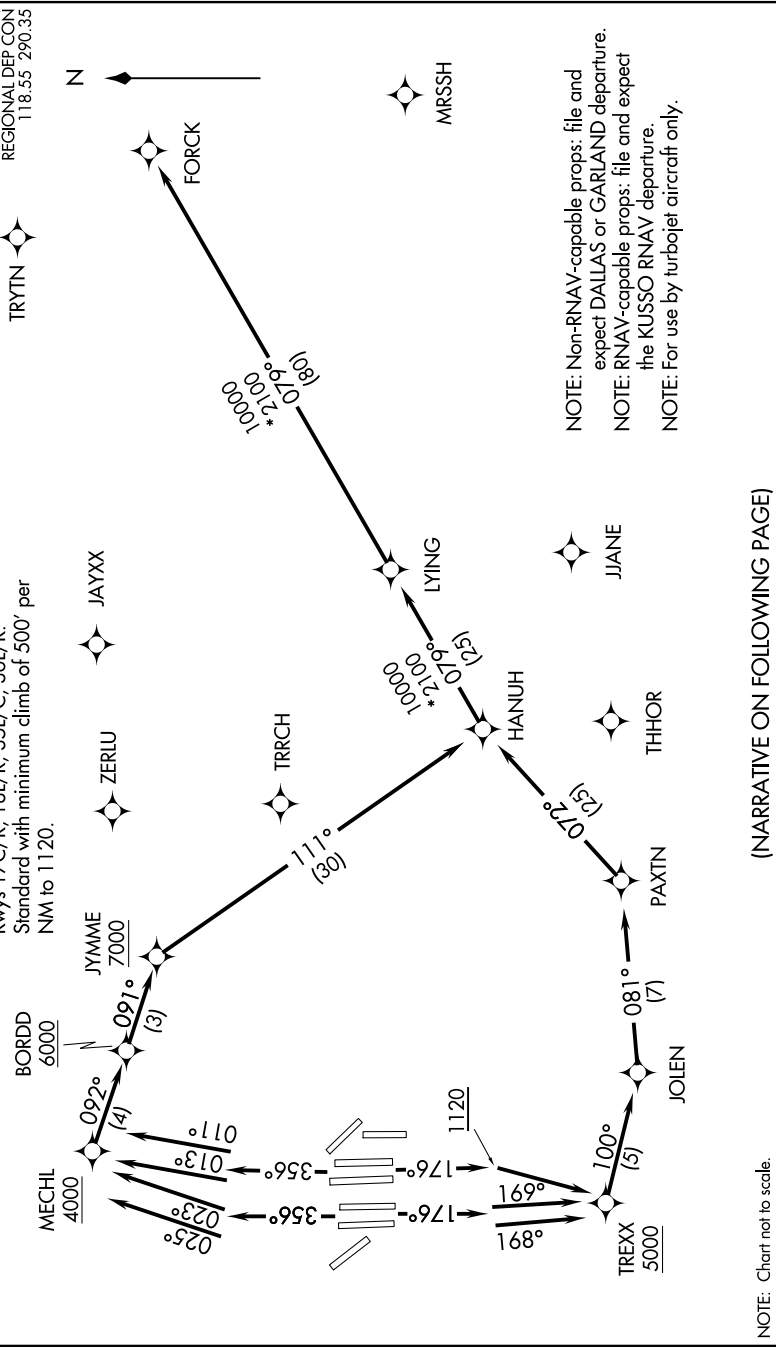
SC-2, 22 FEB 2024 to 21 MAR 2024

D-ATIS DEP 135.925
 CLNC DEL 128.25
 CPDLC
 GND CON
 121.65 121.8 (EAST)
 121.85 (WEST)
 DRW TOWER
 126.55 127.5 (EAST)
 124.15 134.9 (WEST)
 REGIONAL DEP CON
 118.55 290.33

RNAV 1 - DME/DME/IRU or GPS.
 RADAR required.

TAKEOFF MINIMUMS
 Rws 31L/R: Standard.
 Rws 17C/R, 18L/R, 35L/C, 36L/R:
 Standard with minimum climb of 500' per
 NM to 1120.

TOP ALTITUDE:
 RWYS 31L/R: 5000
 RWYS 17C/R, 18L/R,
 35L/C, 36L/R: 10000



NOTE: Non-RNAV-capable props: file and expect DALLAS or GARLAND departure.
 NOTE: RNAV-capable props: file and expect the KUSSO RNAV departure.
 NOTE: For use by turbojet aircraft only.

(NARRATIVE ON FOLLOWING PAGE)

NOTE: Chart not to scale.

SC-2, 22 FEB 2024 to 21 MAR 2024

FORCK THREE DEPARTURE (RNAV)

(FORCK3.FORCK) 08SEP22

DALLAS-FORT WORTH, TEXAS

DALLAS-FORT WORTH INTL (DFW)