

(GREGS.GIBBI2) 17229

AL-6039 (FAA)

DALLAS-FORT WORTH INTL (DFW)

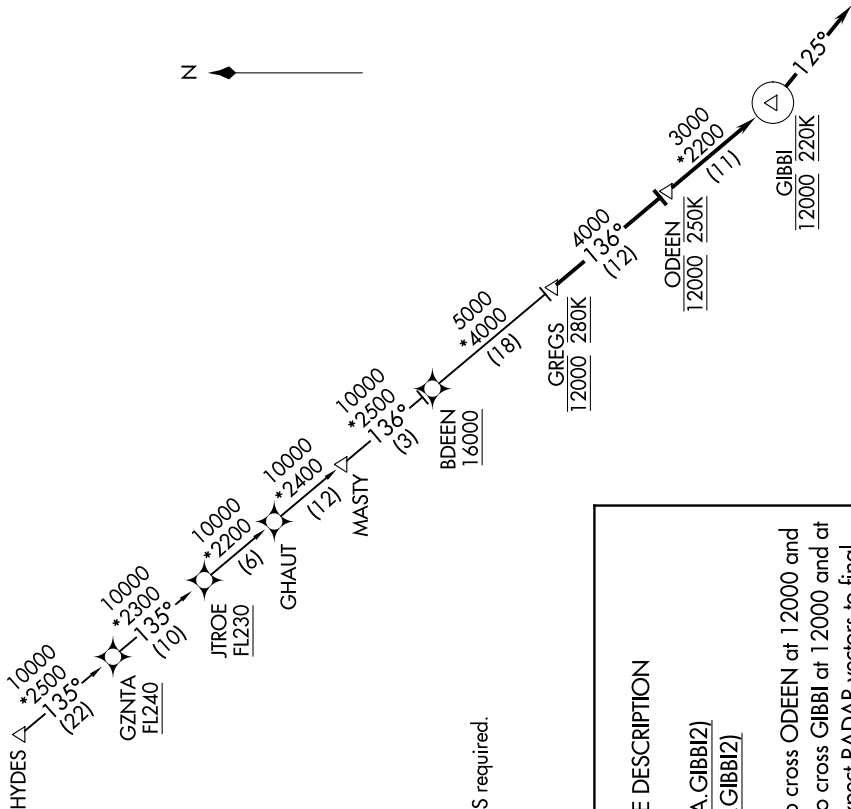
GIBBI TWO ARRIVAL (RNAV)

DALLAS-FORT WORTH, TEXAS

D-ATIS ARR
123.775
REGIONAL APP CON
119.875 284.65



NOTE: Chart not to scale



- NOTE: RADAR required.
- NOTE: RNAV 1.
- NOTE: DME/DME/IRU or GPS required.
- NOTE: Turboplet aircraft only.
- NOTE: ATC assigned only.

ARRIVAL ROUTE DESCRIPTION

GZNTA TRANSITION (GZNTA.GIBBI2)
HYDES TRANSITION (HYDES.GIBBI2)

From GREGS on track 136° to cross ODEEN at 12000 and at 250K, then on track 136° to cross GIBBI at 12000 and at 220K, then on track 125°. Expect RADAR vectors to final approach course.

SC-2, 22 FEB 2024 to 21 MAR 2024

SC-2, 22 FEB 2024 to 21 MAR 2024

GIBBI TWO ARRIVAL (RNAV)

(GREGS.GIBBI2) 25JUN15

DALLAS-FORT WORTH, TEXAS

DALLAS-FORT WORTH INTL (DFW)