

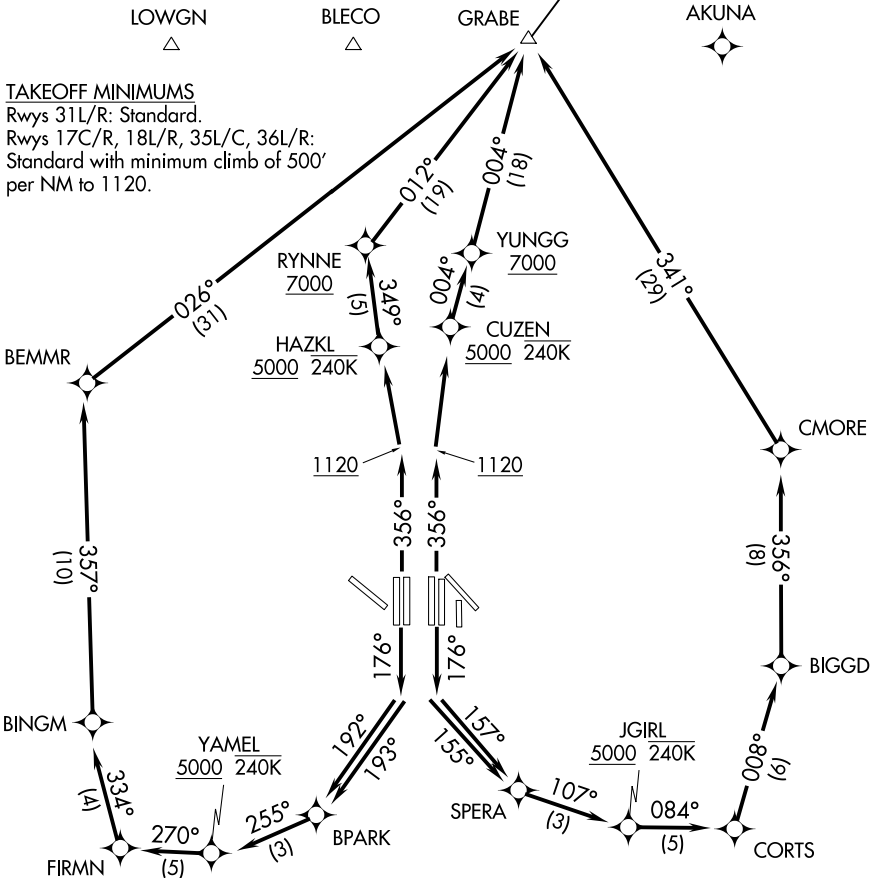
# GRABE EIGHT DEPARTURE (RNAV)

D-ATIS DEP 135.925  
 CLNC DEL 128.25  
 CPDLC  
 GND CON  
 121.65 121.8 (EAST)  
 121.85 (WEST)  
 DFW TOWER  
 126.55 127.5 (EAST)  
 124.15 134.9 (WEST)  
 REGIONAL DEP CON  
 118.55 290.35 (Rwy 17R/C)  
 126.47 363.15 (Rwy 18L/R)  
 125.12 353.95 (Rwys 35L/C and 36L/R)

NOTE: EAKER TRANSITION: For aircraft inbound to the Tulsa terminal area.  
 NOTE: OKMULGEE TRANSITION: For all aircraft overflying the OKM VOR/DME proceeding via J181 to BDF VORTAC then to destinations in the Chicago terminal area and north.  
 NOTE: DME/DME/IRU or GPS required.  
 NOTE: RNAV 1.  
 NOTE: For use by turbojet aircraft only.  
 NOTE: Props file and expect JACKY or TRI-GATE DEPARTURE.  
 NOTE: RADAR required.

OKMULGEE  
OKM

**TOP ALTITUDE:**  
**RWYS 31L/31R: 5000**  
**RWYS 17C/17R/18L/18R/  
 35L/35C/36L/36R: 10000**



**TAKEOFF MINIMUMS**  
 Rwys 31L/R: Standard.  
 Rwys 17C/R, 18L/R, 35L/C, 36L/R:  
 Standard with minimum climb of 500'  
 per NM to 1120.

(NARRATIVE ON FOLLOWING PAGE)

NOTE: Chart not to scale.

# GRABE EIGHT DEPARTURE (RNAV)

SC-2, 22 FEB 2024 to 21 MAR 2024

SC-2, 22 FEB 2024 to 21 MAR 2024