

| | | | |
|--|------------------------|-----------------------------|---|
| WAAS CH 77882 W16A | APP CRS 155° | Rwy Idg TDZE Apt Elev | 5310 689 689 |
|--|------------------------|-----------------------------|---|

RNAV (GPS) RWY 16

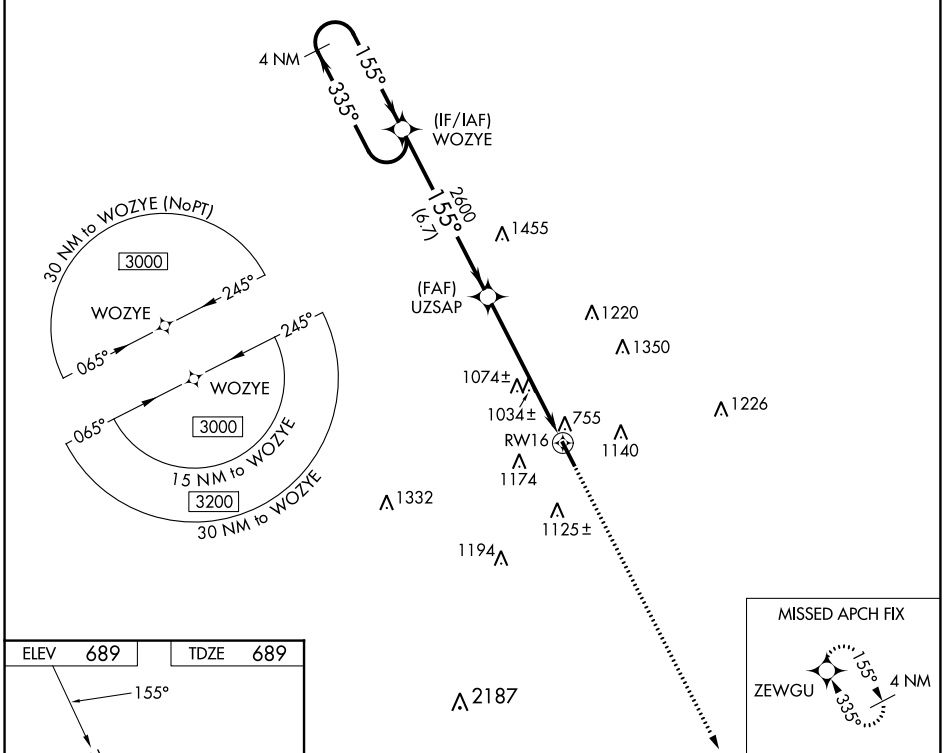
ABERNATHY FLD (GZS)

RNP APCH - GPS.

Procedure NA at night. Helicopter visibility reduction below 1 SM NA. When local altimeter setting not received, use Huntsville Exec Tom Sharp Jr Fld altimeter setting: increase all MDA 100 feet and visibility LP and LNAV Cats C/D 1/8 SM and Circling Cats A/B 1/4 SM and Cat C 1/2 SM.

MISSED APPROACH: Climb to 3000 direct ZEWGU and hold.

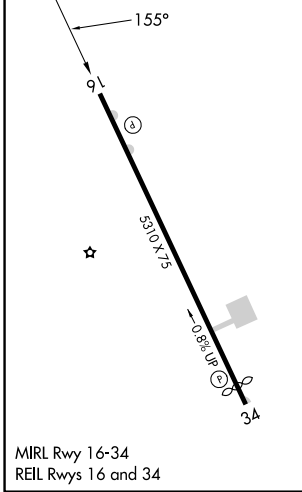
| | | |
|--------------------------|--|-------------------------------|
| AWOS-3 118.275 | MEMPHIS CENTER 125.85 379.25 | UNICOM 122.8 (CTAF) |
|--------------------------|--|-------------------------------|



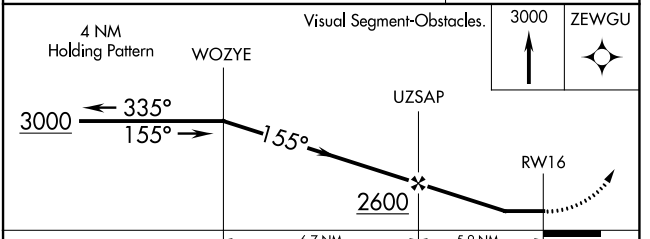
SE-1, 22 FEB 2024 to 21 MAR 2024

SE-1, 22 FEB 2024 to 21 MAR 2024

| | |
|-----------------|-----------------|
| ELEV 689 | TDZE 689 |
|-----------------|-----------------|



MIRL Rwy 16-34
REL Rws 16 and 34



| CATEGORY | A | B | C | D |
|----------|-----------------------|-----------------------|--|--|
| LP MDA | 1300-1 | 611 (700-1) | 1300-1 ³ / ₄ | 611 (700-1 ¹ / ₄) |
| LNAV MDA | 1340-1 | 651 (700-1) | 1340-1 ⁷ / ₈ | 651 (700-1 ⁷ / ₈) |
| CIRCLING | 1420-1 731 (800-1) | 1480-1 791 (800-1) | 1480-2 ¹ / ₄ 791 (800-2 ¹ / ₄) | 1640-3 951 (1000-3) |