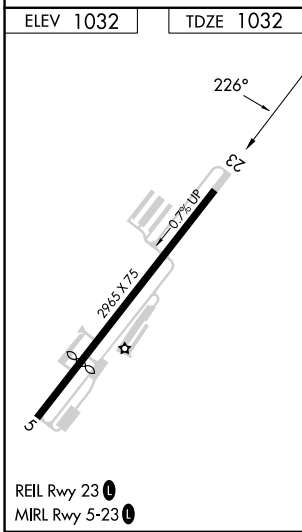
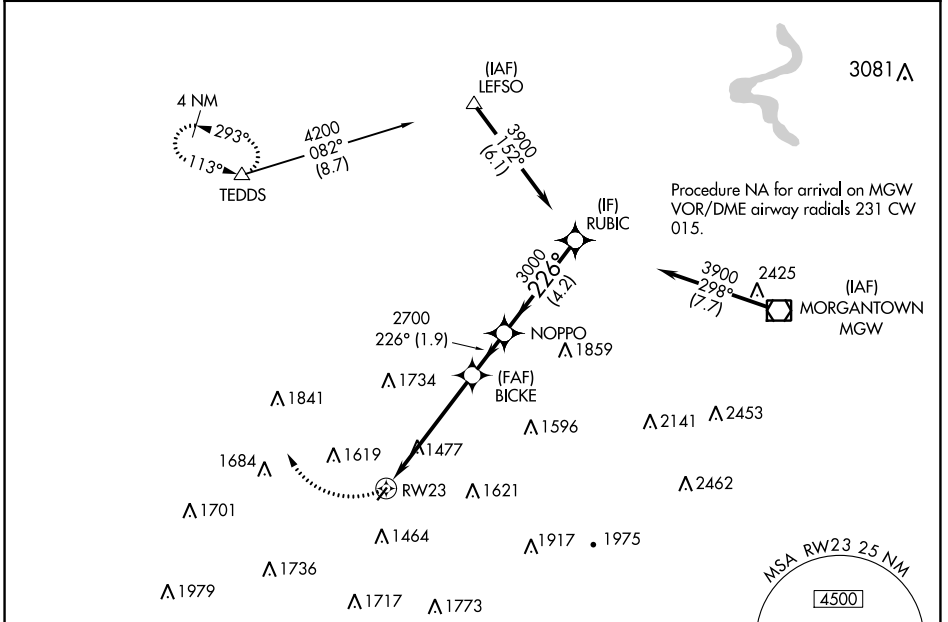


APP CRS 226°	Rwy Idg 2965
TDZE 1032	
Apt Elev 1032	

RNAV (GPS) RWY 23

FAIRMONT MUNI-FRANKMAN FLD (4G7)

RNP APCH.		MISSED APPROACH: Climbing right turn to 4000 direct TEDDS and hold.	
<p>Procedure NA at night. Rwy 23 helicopter visibility reduction below 1 SM NA.</p>			
CKB ASOS-3 127,825	CLARKSBURG APP CON* 121.15 284.65	CLNC DEL 118.35	UNICOM 122.8 (CTAF)



4000 TEDDS		Visual Segment - Obstacles.		
RWY 23		BICKE	NOPPO	RUBIC
		2700	3000	3900
		5.1 NM	1.9 NM	4.2 NM
CATEGORY	A	B	C	D
LNAV MDA	1840-1 808 (900-1)	1840-1¼ 808 (900-1¼)	1840-2½ 808 (900-2½)	NA
CIRCLING	1840-1 808 (900-1)	1840-1¼ 808 (900-1¼)	2020-3 988 (1000-3)	NA

NE-4, 22 FEB 2024 to 21 MAR 2024

NE-4, 22 FEB 2024 to 21 MAR 2024