

VORTAC MSN 108.6 Chan 23	APP CRS 254°	Rwy Idg TDZE Apt Elev	4001 928 928
---------------------------------------	------------------------	-----------------------------	---

VOR RWY 28

MIDDLETON MUNI/MOREY FLD (C29)

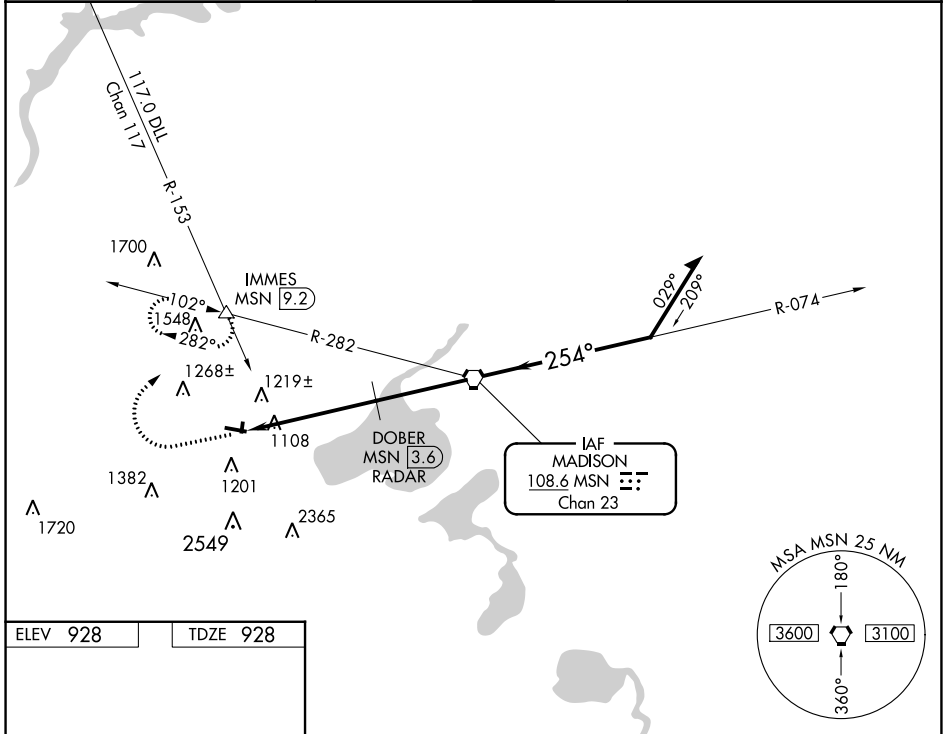
⚠ When local altimeter setting not received, use Dane County Rgnl/Truax Fld altimeter setting and increase all MDAs 40 feet and S-28 visibility Cat C 1/8 SM, and Circling visibility Cat C 1/4 SM. RADAR or DME required. Circling NA to Rwys 1 and 19. Rwy 28 helicopter visibility reduction below 1 SM NA. Straight-in Rwy 28 NA at night, Circling Rwy 28 NA at night.

MISSED APPROACH: Climb to 2000 then climbing right turn to 3500 on heading 020° and MSN R-282 to IMMES INT/9.2 DME and hold.

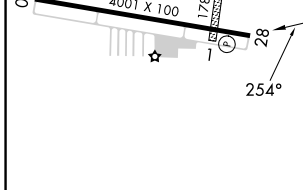
AWOS-3 118.675

MADISON APP CON*	135.45 343.7
------------------	---------------------

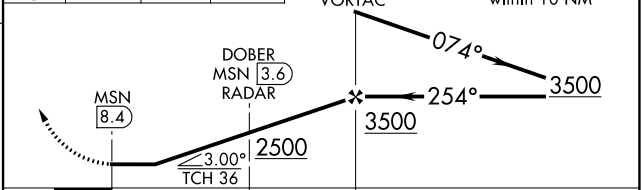
UNICOM 123.0 (CTAF) 0



ELEV 928	TDZE 928
----------	----------



2000	3500	MSN R-282	IMMES	VGSI and descent angles not coincident (VGSI Angle 4.00/TCH 36).
------	------	-----------	-------	--



MIRL Rwy 10-28
REIL Rwys 10 and 28

FAF to MAP 8.4 NM

Knots	60	90	120	150	180
Min:Sec	8:24	5:36	4:12	3:22	2:48

CATEGORY	A	B	C	D
S-28	1500-1	572 (600-1)	1500-1½ 572 (600-1½)	NA
CIRCLING	1560-1 632 (700-1)	1640-1 712 (800-1)	1660-2 732 (800-2)	NA

EC-3, 22 FEB 2024 to 21 MAR 2024

EC-3, 22 FEB 2024 to 21 MAR 2024