

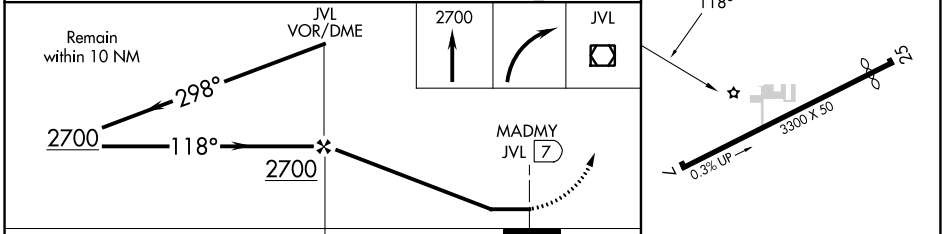
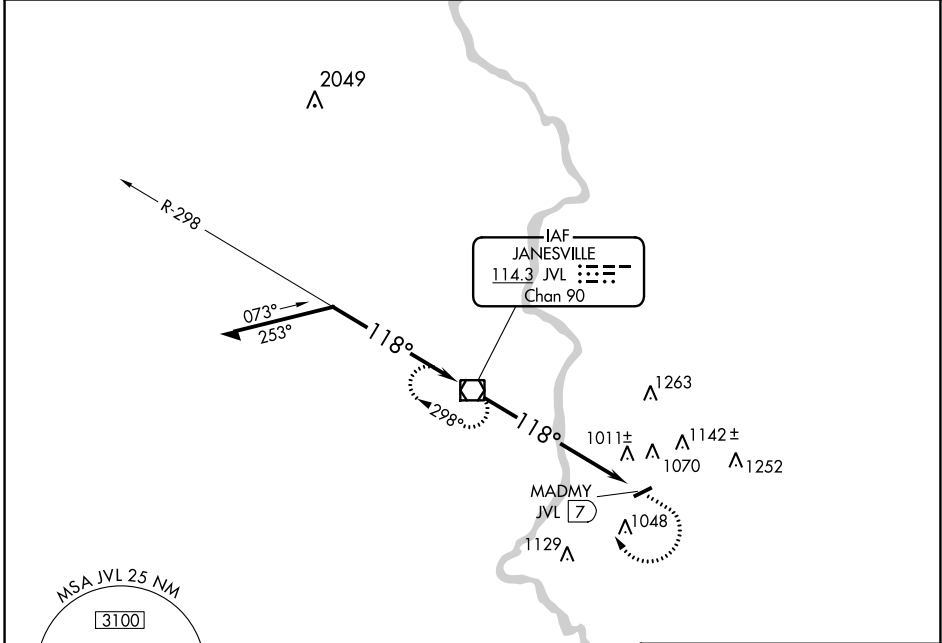
VOR/DME JVL 114.3 Chan 90	APP CRS 118°	Rwy Idg TDZE Apt Elev	N/A N/A 817
---	------------------------	-----------------------------	--

VOR-A
BELOIT (44C)

NA Use Janesville altimeter setting, when not received, use Chicago/Rockford Intl altimeter setting.

MISSED APPROACH: Climb to 2700 then right turn direct JVL VOR/DME and hold.

ROCKFORD APP CON 121.0 327.0	UNICOM 122.7 (CTAF) 0
--	---------------------------------



CATEGORY	A	B	C	D	LIRL Rwy 7-25 0	
CIRCLING	1440-1 623 (700-1)	1540-1 723 (800-1)	NA	NA		
CHICAGO/ROCKFORD INTL ALTIMETER SETTING MINIMUMS						
CIRCLING	1480-1 663 (700-1)	1580-1 763 (800-1)	NA	NA	FAF to MAP 7 NM	
	Knots	60	90	120	150	180
	Min:Sec	7:00	4:40	3:30	2:48	2:20