

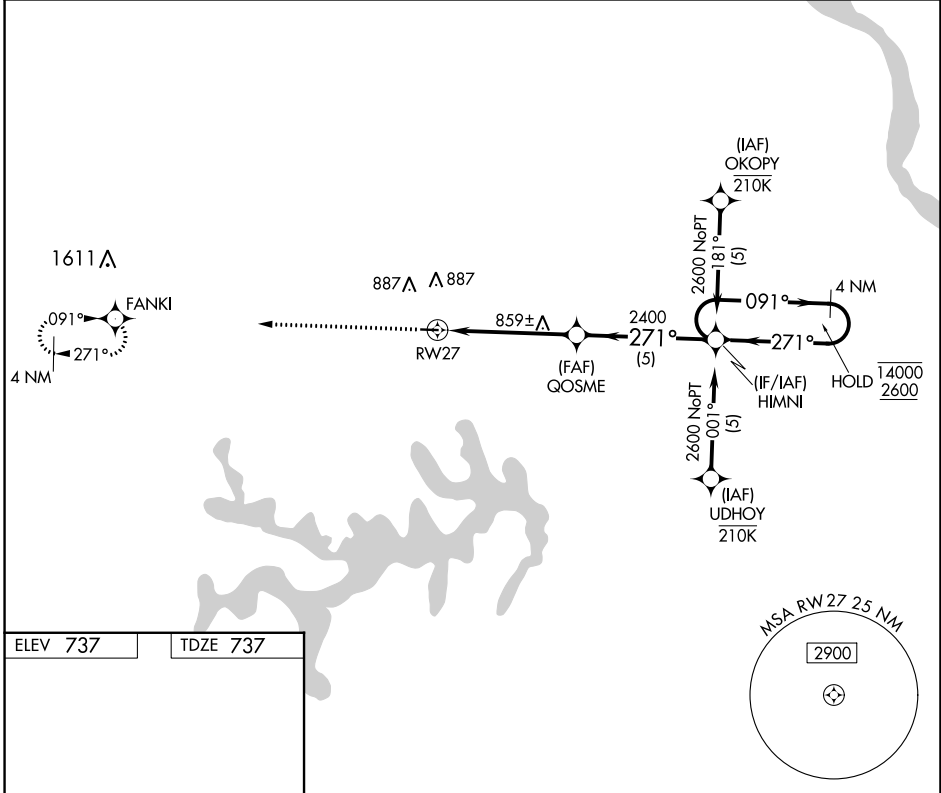
APP CRS	Rwy Idg	3515
271°	TDZE	737
	Apt Elev	737

RNAV (GPS) RWY 27

CPT BEN SMITH AIRFIELD-MONROE CITY (K52)

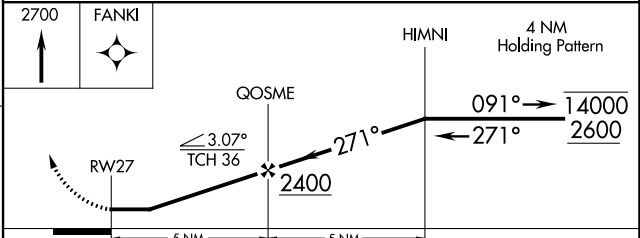
RNP APCH - GPS.	MISSED APPROACH: Climb to 2700 direct FANKI and hold.
<p>▼ Procedure NA at night. Rwy 27 helicopter visibility reduction below 1 SM NA. Use Quincy, IL altimeter setting.</p>	

UIN ASOS 121.425	KANSAS CITY CENTER 126.225 317.775	UNICOM 122.8 (CTAF) 0
----------------------------	--	---------------------------------



ELEV 737	TDZE 737
----------	----------

MIRL Rwy 9-27



CATEGORY	A	B	C	D
LNAV MDA	1240-1	503 (600-1)	1240-1 ⁵ / ₈ 503 (600-1 ⁵ / ₈)	NA
C CIRCLING	1380-1	643 (700-1)	1380-1 ³ / ₄ 643 (700-1 ³ / ₄)	NA

NC-3, 22 FEB 2024 to 21 MAR 2024

NC-3, 22 FEB 2024 to 21 MAR 2024