

WAAS CH 97633 W11A	APP CRS 109°	Rwy Idg TDZE Apt Elev	3321 1172 1174
--	------------------------	-----------------------------	---

RNAV (GPS) RWY 11

GEAUGA COUNTY (7G8)

RNP APCH - GPS.

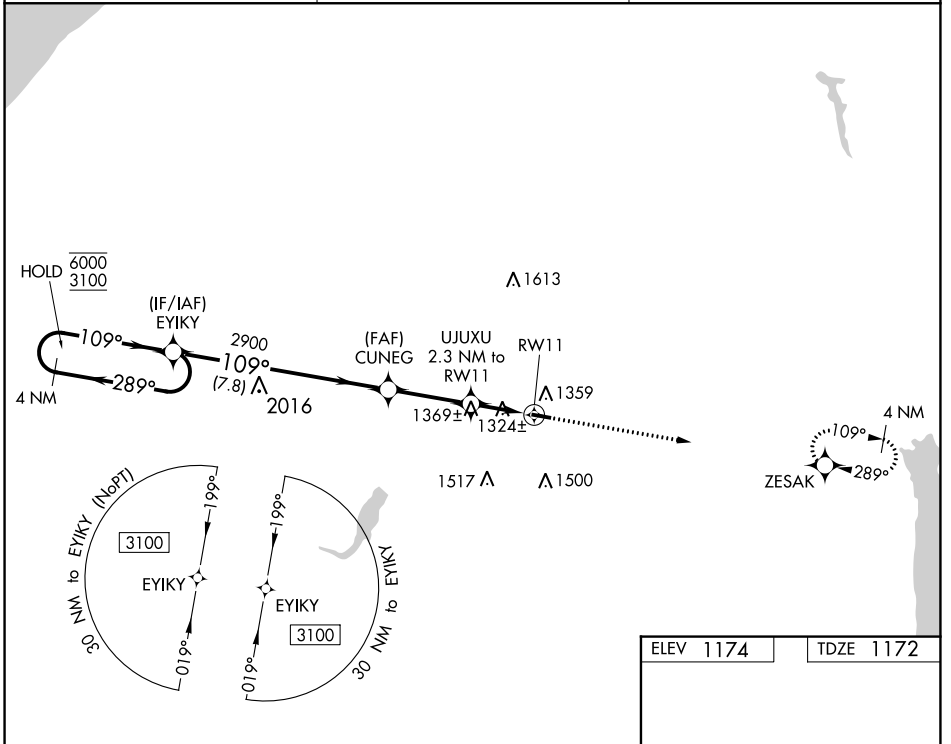
⚠ Rwy 11 helicopter visibility reduction below 1 SM NA. Use Youngstown/Warren altimeter setting; when not received, use Cuyahoga County altimeter setting and increase all MDAs 40 feet and increase LNAV Cat C and Circling Cat C visibilities ¼ SM. Straight-in Rwy 11 NA at night, Circling Rwy 11 NA at night.

MISSED APPROACH:
Climb to 4000 direct ZESAK and hold, continue climb-in-hold 4000.

YNG ASOS
123.75

CLEVELAND APP CON
125.35 346.325

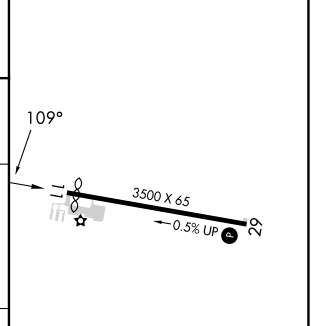
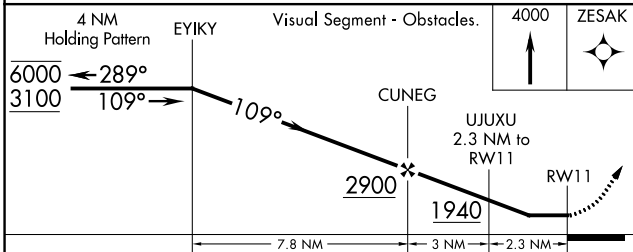
UNICOM
123.0 (CTAF)



EC-2, 22 FEB 2024 to 21 MAR 2024

EC-2, 22 FEB 2024 to 21 MAR 2024

ELEV 1174	TDZE 1172
-----------	-----------



CATEGORY	A	B	C	D
LP MDA	1640-1	468 (500-1)	1640-1½ 468 (500-1½)	NA
LNAV MDA	1680-1	508 (600-1)	1680-1½ 508 (600-1½)	NA
C CIRCLING	1760-1	586 (600-1)	1900-2 726 (800-2)	NA

REIL Rwy 11 and 29 **Ⓛ**
MIRL Rwy 11-29 **Ⓛ**