

WAAS CH 40021	APP CRS 009°	Rwy Idg TDZE 1059	5000
W01A		Apt Elev 1077	

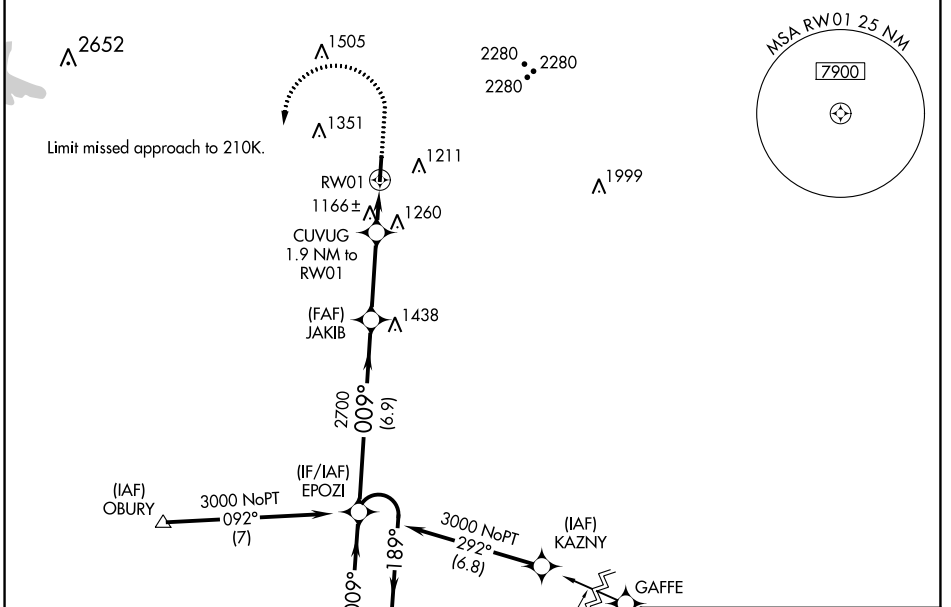
RNAV (GPS) RWY 1

RUTHERFORD COUNTY/MARCHMAN FLD (FQD)

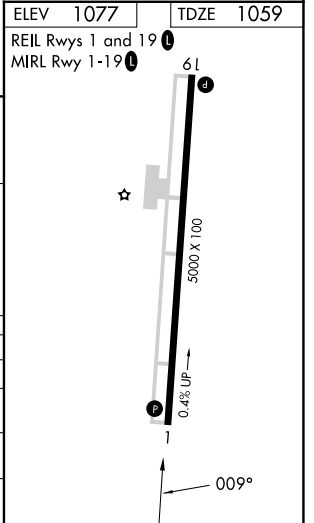
⚠ Baro-VNAV NA when using Shelby-Cleveland County Rgnl altimeter setting. For uncompensated Baro-VNAV systems, LNAV/VNAV NA below -17°C (2°F) or above 54°C (130°F). DME/DME RNP-0.3 NA. When local altimeter setting not received, use Shelby-Cleveland County Rgnl altimeter setting and increase all DA 77 feet, all MDA 80 feet, and increase LPV all Cats, LNAV/VNAV all Cats, LNAV Cats C/D and Circling Cats C/D visibility ¼ mile. VDP NA with Shelby-Cleveland County Rgnl altimeter setting.

MISSED APPROACH: Climb to 1700 then climbing left turn to 3000 direct EPOZI and hold.

AWOS-3 118.275	GREER APP CON ★ 119.4 350.2	UNICOM 122.8 (CTAF) 0
--------------------------	---------------------------------------	---------------------------------



4 NM Holding Pattern		EPOZI	JAKIB	CUVUG	RW01
3000 ← 189°		009° →	2700	1.9 NM to RW01	*1 NM to RW01
GP 3.00° TCH 40		2700	*1700		
		← 6.9 NM	← 3.1 NM	← 0.9 NM	← 1 NM
CATEGORY	A	B	C	D	
LPV DA		1309-7/8	250 (300-7/8)		
LNAV/VNAV DA		1459-13/8	400 (400-13/8)		
LNAV MDA		1420-1	361 (400-1)		
CIRCLING	1560-1 483 (500-1)	1620-1 543 (600-1)	1640-1½ 563 (600-1½)	1820-2½ 743 (800-2½)	



SE-2, 22 FEB 2024 to 21 MAR 2024

SE-2, 22 FEB 2024 to 21 MAR 2024