

WAAS CH 82335 W19A	APP CRS 189°	Rwy Idg TDZE Apt Elev	5000 1077 1077
---------------------------------	------------------------	-----------------------------	---

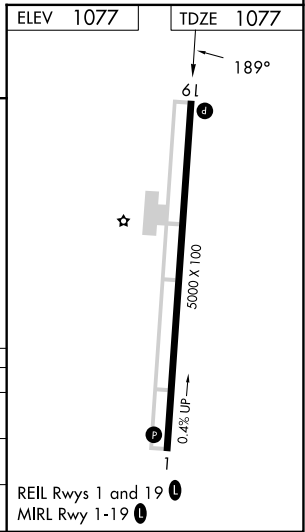
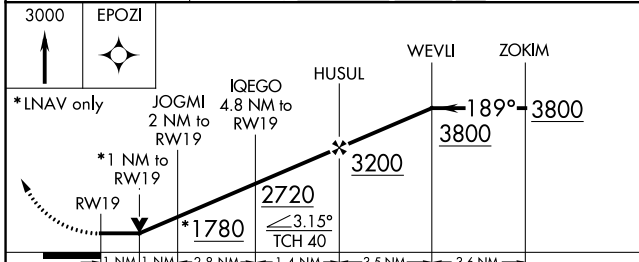
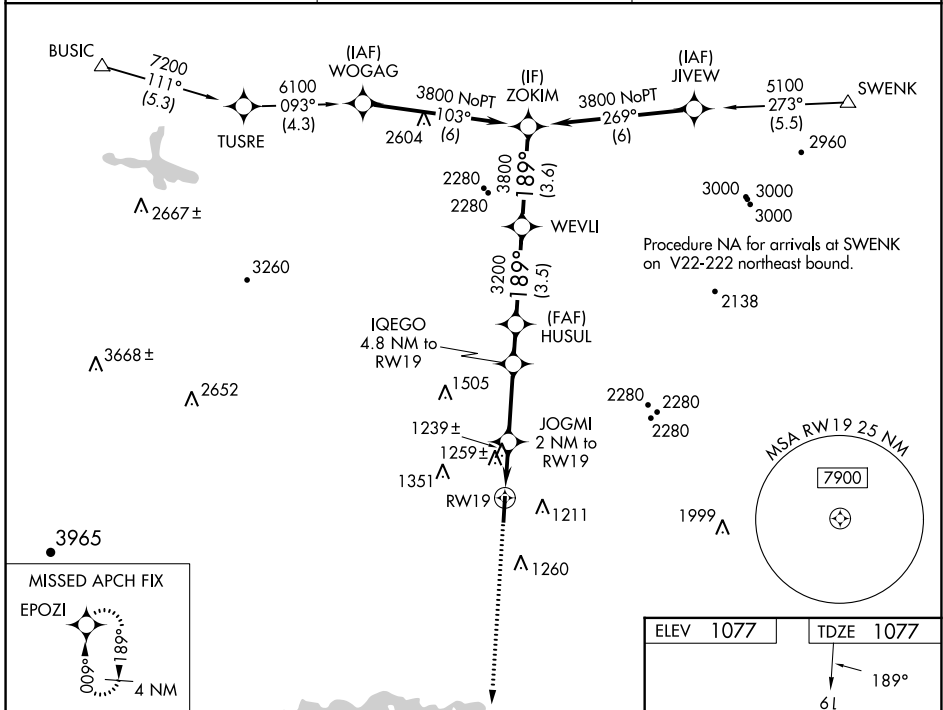
RNAV (GPS) RWY 19

RUTHERFORD COUNTY/MARCHMAN FLD (FQD)

▼ DME/DME RNP-0.3 NA. When local altimeter setting not received, use Shelby-Cleveland County Rgnl altimeter setting and increase all MDA 80 feet and increase LP and LNAV Cat C and D ½ mile, increase Circling Cat C and D visibility ¼ mile. Rwy 19 helicopter visibility reduction below ¾ mile NA.

MISSED APPROACH:
Climb to 3000 direct EPOZI and hold.

AWOS-3 118.275	GREER APP CON ★ 119.4 350.2	UNICOM 122.8 (CTAF) 0
--------------------------	---------------------------------------	---------------------------------



SE-2, 22 FEB 2024 to 21 MAR 2024

SE-2, 22 FEB 2024 to 21 MAR 2024