

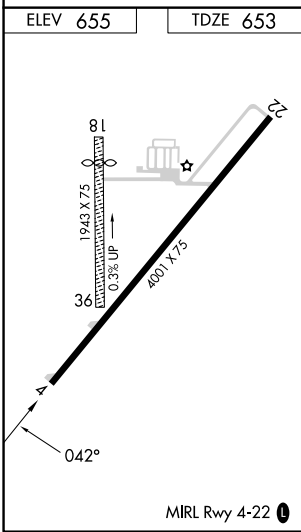
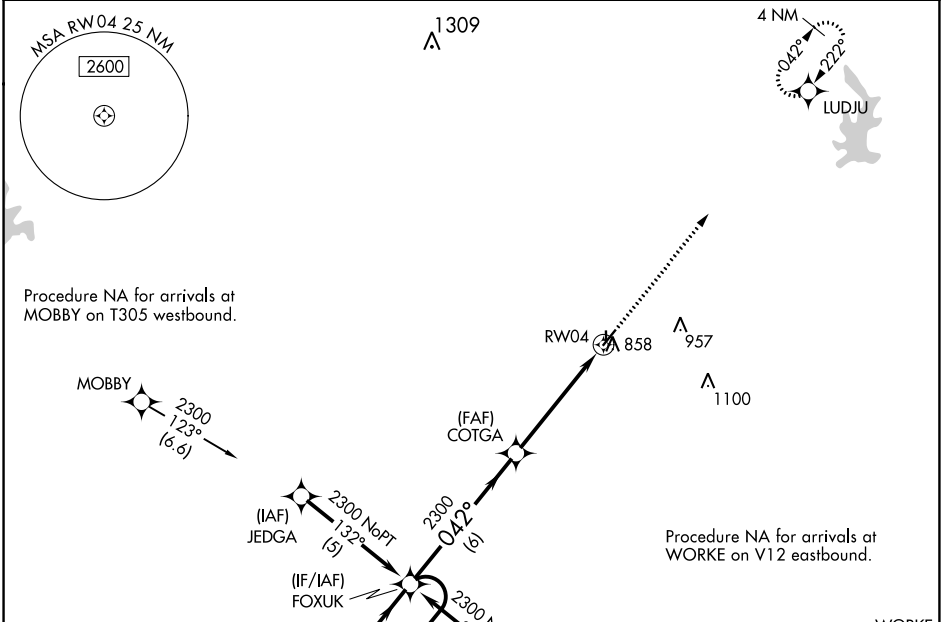
APP CRS	Rwy Idg	4001
042°	TDZE	653
	Apt Elev	655

RNAV (GPS) RWY 4

CASEY MUNI (1H8)

RNP APCH - GPS.	MISSED APPROACH: Climb to 2500 direct LUDJU and hold.
<p>▼ Rwy 4 helicopter visibility reduction below ¼ SM NA.</p> <p>▲ NA Use Terre Haute Rgnl altimeter setting; when not received, use Robinson altimeter setting.</p>	

HUF ASOS 127.5 269.375	HULMAN APP CON 125.45 263.125	UNICOM 122.8 (CTAF)
----------------------------------	---	-------------------------------



ELEV 655	TDZE 653			
<p>4 NM Holding Pattern</p> <p>6000 ← 222°</p> <p>2300 → 042°</p> <p>2300 → 042°</p> <p>2300</p> <p>3.04° TCH 40</p> <p>6 NM</p> <p>5 NM</p>		2500	LUDJU	
CATEGORY	A	B	C	D
LNAV MDA	1260-1	607 (700-1)	1260-1¾ 607 (700-1¾)	1260-2 607 (700-2)

EC-3, 22 FEB 2024 to 21 MAR 2024

EC-3, 22 FEB 2024 to 21 MAR 2024