

CAMP MACKALL, NORTH CAROLINA

RNAV (GPS) RWY 30

WAAS CH 51219 W30A	APCH CRS 298°	Rwy ldg TDZE 4794 352	Arprt Elev 376
--------------------------	------------------	-----------------------------	-------------------

AL-6315 (USA)

MACKALL AAF (KHFF)

RNP APCH-GPS	MISSED APPROACH: Climb to 2400 direct AAMMO and hold.
RADAR required when special use space active.	
* When tower closed, increase vis to 1 mile.	

D-ATIS 141.4	FAYETTEVILLE APP CON/DEP CON 127.8 343.725	TOWER* 121.0 (CTAF) 254.4	GND CON 128.35 251.05
-----------------	---	------------------------------	--------------------------

** Circling NA to RWYs 4, 16, 22, and 34.

RWY 30 helicopter visibility reduction below 3/4 mile NA.

Baro-VNAV NA when using Simmons AAF altimeter setting.

For uncompensated Baro-VNAV systems, LNAV/VNAV NA below -15°C or above 54°C.

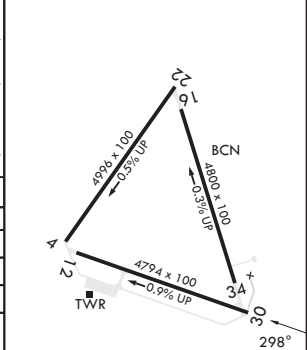
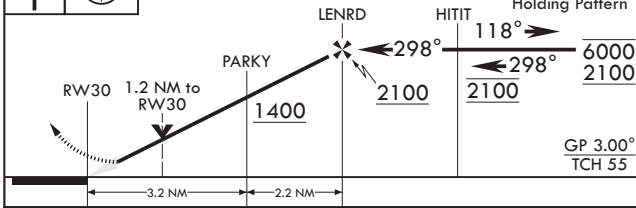
When local altimeter setting not received, use Simmons AAF altimeter setting.

VDP NA with Simmons altimeter setting.

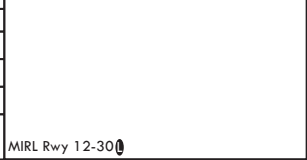
Additional restrictions are in effect when restricted areas are active.

1043

2400	AAMMO	ELEV 376	TDZE 352
------	-------	----------	----------



CATEGORY	A	B	C	D
LPV DA*	602-3/4	250	(300-3/4)	
LNAV/VNAV DA	793-1 1/8	441	(500-1%)	
LNAV MDA	760-1 408 (400-1)	760-1 1/8 408 (400-1 1/8)		
C CIRCLING**	860-1 484 (500-1)	880-1 504 (600-1)	980-1 1/4 604 (700-1 1/4)	1040-2 664 (700-2)
SIMMONS AAF ALTIMETER SETTING MINIMUMS				
LPV DA	686-1	334	(400-1)	
LNAV/VNAV DA	860-1 1/8	508	(500-1%)	
LNAV MDA	860-1 508 (500-1)	860-1 1/8 508 (500-1%)		
C CIRCLING**	960-1 584 (600-1)	980-1 604 (700-1)	1080-2 704 (800-2)	1140-2 1/2 764 (800-2 1/2)



CAMP MACKALL, NORTH CAROLINA 35°02'N - 79°30'W MACKALL AAF (KHFF)

Amdt 1 07SEP23

RNAV (GPS) RWY 30

SE-2, 22 FEB 2024 to 21 MAR 2024

SE-2, 22 FEB 2024 to 21 MAR 2024