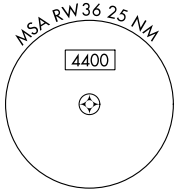
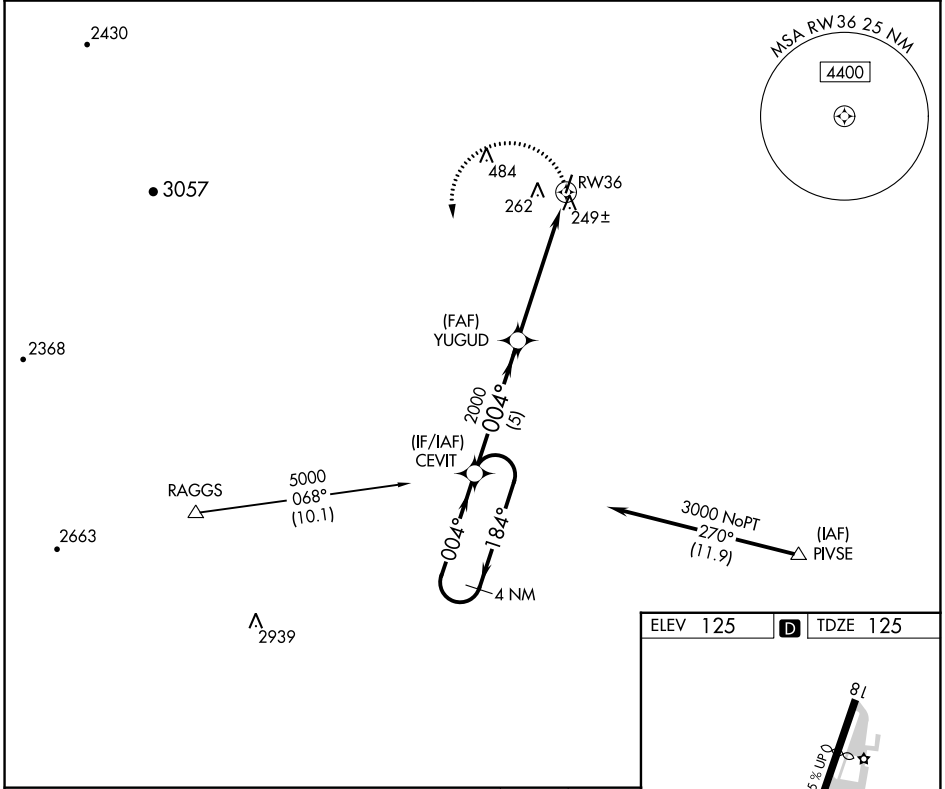


APP CRS	Rwy Idg	3244
004°	TDZE	125
	Apt Elev	125

RNAV (GPS) RWY 36

WATTS-WOODLAND (O41)

<p>NA Procedure NA at night. Use Sacramento Intl altimeter setting; when not received, use Sacramento Exec altimeter setting and increase all MDA 20 feet.</p>	<p>MISSED APPROACH: Climbing left turn to 3000 direct CEVIT and hold.</p>
<p>TRAVIS APP CON 126.6 281.45</p>	<p>UNICOM 122.8 (CTAF)</p>



SW-2, 22 FEB 2024 to 21 MAR 2024

SW-2, 22 FEB 2024 to 21 MAR 2024

4 NM Holding Pattern	CEVIT	YUGUD	3000	CEVIT
3000 ← 184°	004° →	004°	3.05° TCH 40	RW36
	2000			
	5 NM	5.7 NM		
CATEGORY	A	B	C	D
RNAV MDA	560-1	435 (500-1)	NA	
CIRCLING	620-1	495 (500-1)	NA	

