

APP CRS	Rwy Idg	<b>3013</b>
<b>167°</b>	TDZE	<b>13</b>
	Apt Elev	<b>13</b>

# RNAV (GPS) RWY 17

DARE COUNTY RGNL (MQI)

RNP APCH - GPS.

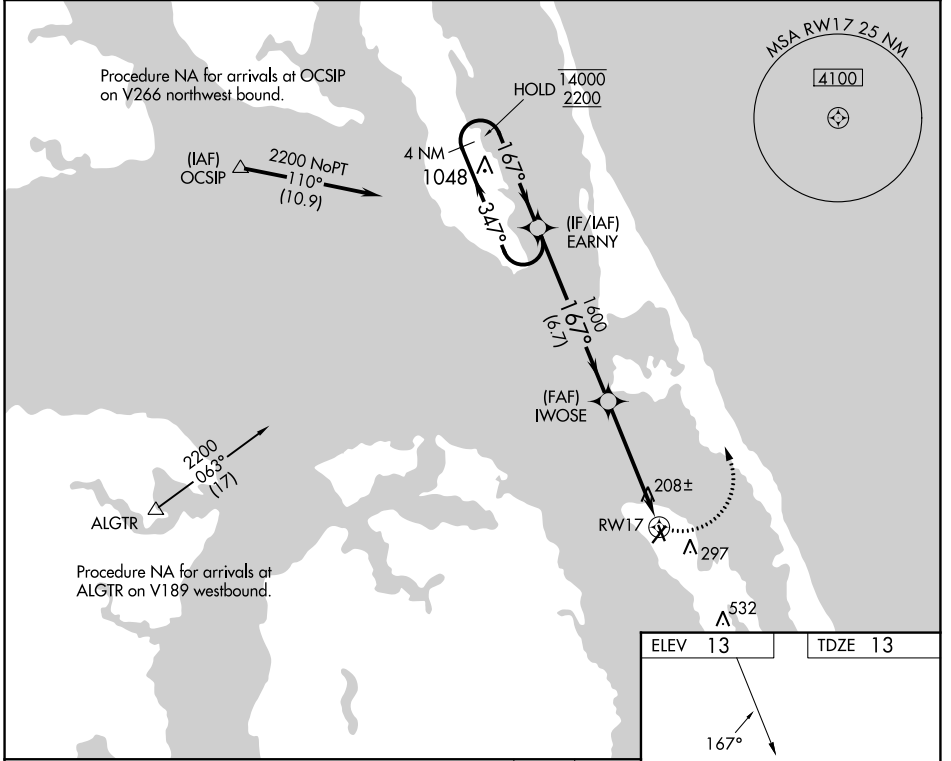
**⚠** Circling Rwy 23, 35 NA at night. Rwy 17 helicopter visibility reduction below 1 SM NA. Straight-in and Circling Rwy 17 NA at night.

MISSED APPROACH: Climbing left turn to 2200 direct EARNY and hold.

AWOS-3  
**128.275**

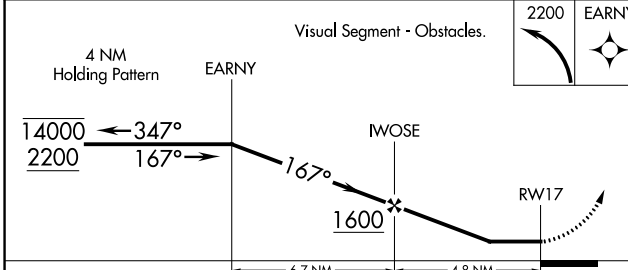
CHERRY POINT APP CON  
**124.725 350.35**

UNICOM  
**122.8 (CTAF) 0**

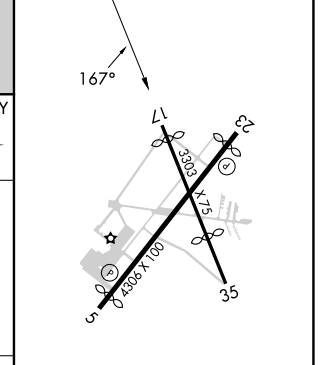


SE-2, 22 FEB 2024 to 21 MAR 2024

SE-2, 22 FEB 2024 to 21 MAR 2024



ELEV 13	TDZE 13
---------	---------



CATEGORY	A	B	C	D
LNAV MDA	460-1	447 (500-1)	460-1 <sup>3</sup> / <sub>8</sub> 447 (500-1 <sup>3</sup> / <sub>8</sub> )	NA
<b>C</b> CIRCLING	600-1	587 (600-1)	600-1 <sup>1</sup> / <sub>2</sub> 587 (600-1 <sup>1</sup> / <sub>2</sub> )	NA

REIL Rwy 5 **0**  
MIRL Rwy 5-23 and 17-35 **0**