

APP CRS	Rwy Idg	<b>4005</b>
<b>227°</b>	TDZE	<b>12</b>
	Apt Elev	<b>13</b>

# RNAV (GPS) RWY 23

DARE COUNTY RGNL (MQI)

RNP APCH - GPS.

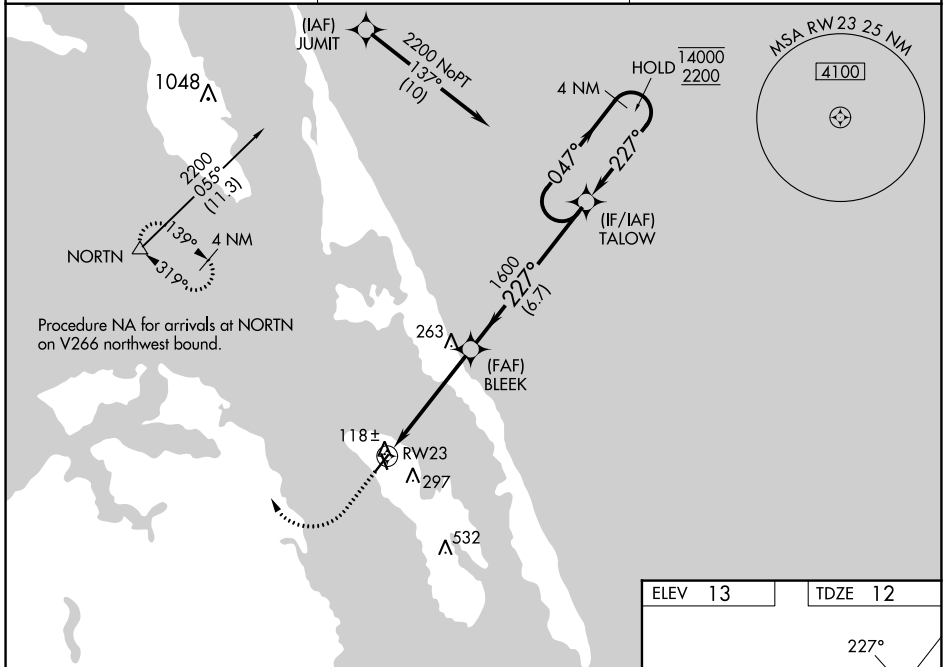
**⚠**  
**⚠** Circling Rwy 17, 35 NA at night. Rwy 23 helicopter visibility reduction below 1 SM NA. Straight-in/Circling Rwy 23 NA at night.

MISSED APPROACH: Climb to 600 then climbing right turn to 4000 direct NORTN and hold, continue climb-in-hold to 4000.

AWOS-3  
**128.275**

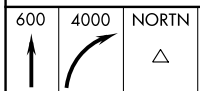
CHERRY POINT APP CON  
**124.725 350.35**

UNICOM  
**122.8(CTAF) 0**

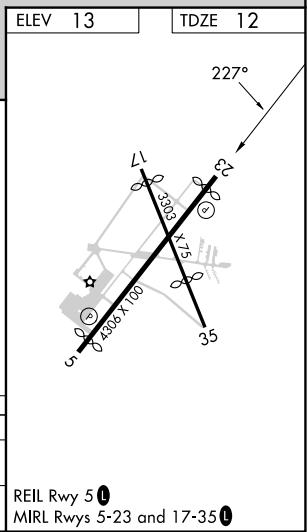
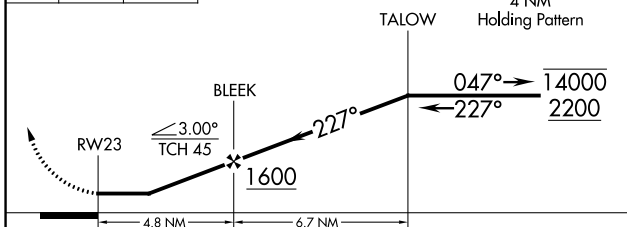


SE-2, 22 FEB 2024 to 21 MAR 2024

SE-2, 22 FEB 2024 to 21 MAR 2024



VGSI and descent angles not coincident (VGSI Angle 4.00/TCH 31).



CATEGORY	A	B	C	D
LNVA MDA	520-1 508 (600-1)	520-1 508 (600-1)	520-1 508 (600-1)	NA
<b>C</b> CIRCLING	600-1 587 (600-1)	600-1 587 (600-1)	600-1 587 (600-1)	NA