

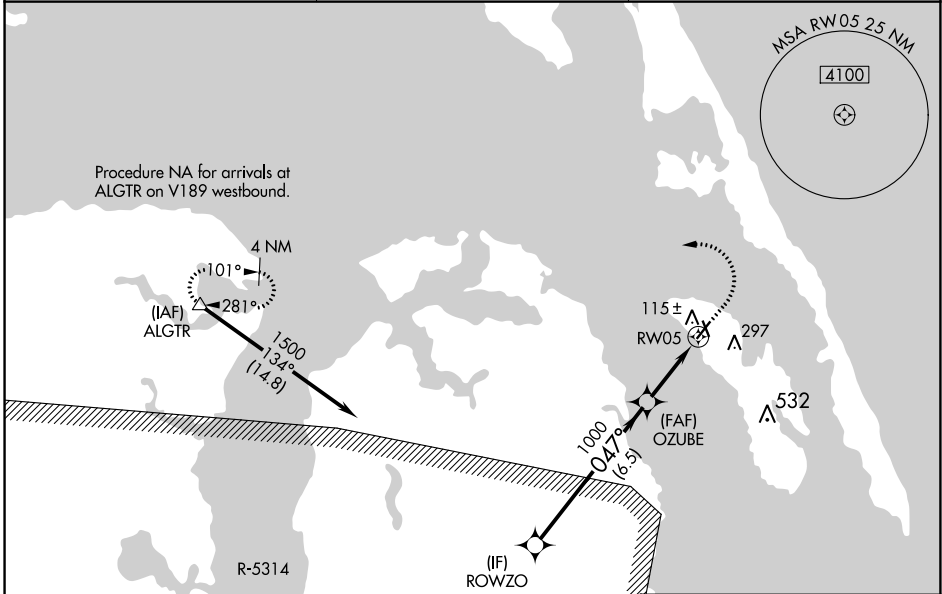
WAAS CH 72626 W05A	APP CRS 047°	Rwy Idg TDZE 12 Apt Elev 13	4001
--	------------------------	---	-------------

RNAV (GPS) RWY 5

DARE COUNTY RGNL (MQI)

RNP APCH - GPS.		MISSED APPROACH: Climb to 500 then climbing left turn to 3000 direct ALGTR and hold.
Circling Rwy 17, 23, 35 NA at night. For uncompensated Baro-VNAV systems, LNAV/VNAV NA below -5°C or above 34°C.		

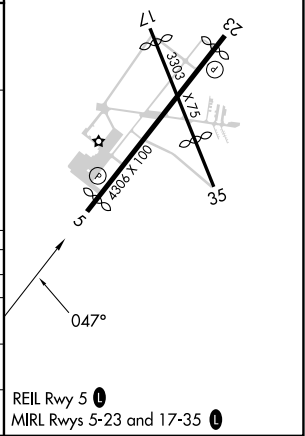
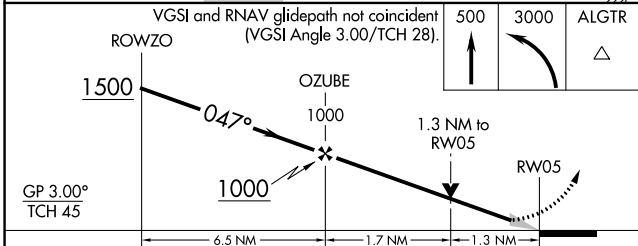
AWOS-3 128.275	CHERRY POINT APP CON 124.725 350.35	UNICOM 122.8 (CTAF) 0
--------------------------	---	---------------------------------



SE-2, 22 FEB 2024 to 21 MAR 2024

SE-2, 22 FEB 2024 to 21 MAR 2024

ELEV 13	TDZE 12
---------	---------



CATEGORY	A	B	C	D
LPV DA	262-3/4	250 (300-3/4)		NA
LNAV/VNAV DA	347-1	335 (400-1)		NA
LNAV MDA	460-1	448 (500-1)	460-1 3/8 448 (500-1 3/8)	NA
CIRCLING	600-1	587 (600-1)	600-1 1/2 587 (600-1 1/2)	NA

REIL Rwy 5 0
MIRL Rwy 5-23 and 17-35 0