

APP CRS  
**091°**

Rwy Idg **4504**  
TDZE **451**  
Apt Elev **481**

# RNAV (GPS) RWY 9

CLARKSVILLE MUNI (H35)

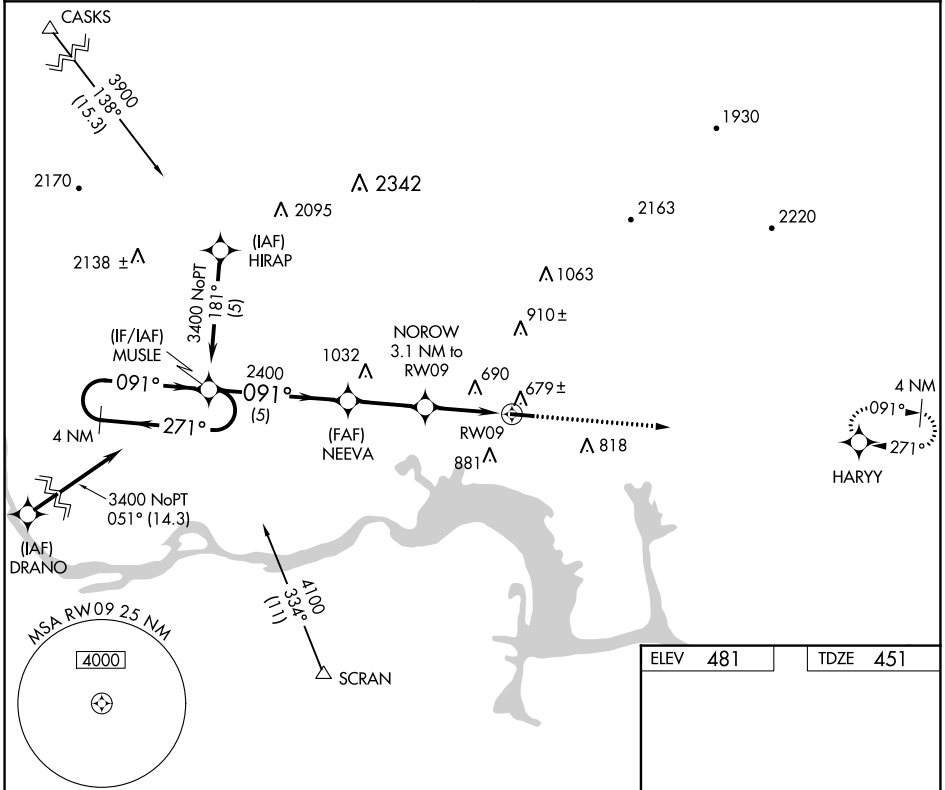
RNP APCH.

**▽** Use Russellville Rgnl altimeter setting; If not received, use Fort Smith Rgnl altimeter setting and increase all MDAs 60 feet. Procedure NA at night.  
**△ NA** Rwy 9 helicopter visibility reduction below 1 SM NA.

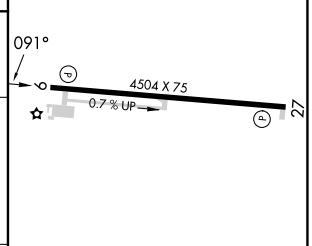
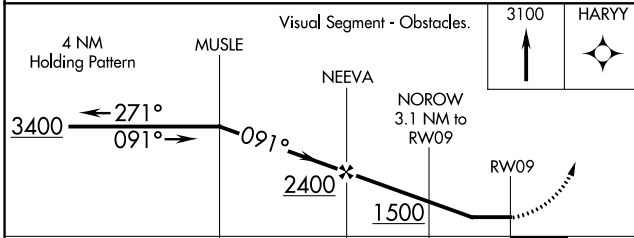
MISSED APPROACH: Climb to 3100 direct HARRY WP and hold.

MEMPHIS CENTER  
**128.475 377.15**

UNICOM  
**122.8 (CTAF)**



ELEV **481** TDZE **451**



CATEGORY	A	B	C	D
RNAV MDA	1060-1 609 (600-1)			
CIRCLING	1220-1 739 (800-1)	1240-1¼ 759 (800-1¼)	NA	

MIRL Rwy 9-27

SC-1, 22 FEB 2024 to 21 MAR 2024

SC-1, 22 FEB 2024 to 21 MAR 2024