

SW-1, 22 FEB 2024 to 21 MAR 2024

DEPARTURE ROUTE DESCRIPTION

TAKEOFF RUNWAY 25: Begin a climbing left turn as soon as practicable but no later than DER heading 206° to 7100, then direct COPER, then on depicted route to cross APRES at or above 13100, thence. . . .

. . . on (assigned) transition, maintain 15000. Expect filed altitude 10 minutes after departure.

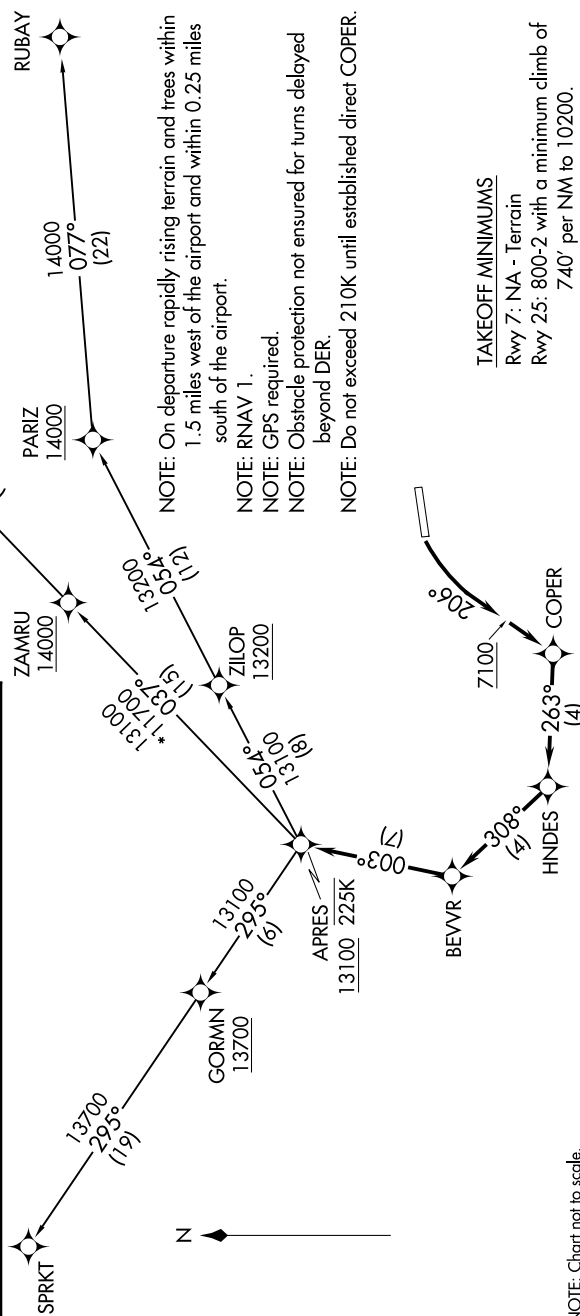
BELGN TRANSITION (BEVVR1.BELGN)

RUBAY TRANSITION (BEVVR1.RUBAY)

SPRKT TRANSITION (BEVVR1.SPRKT)

**TOP ALTITUDE:
15000**

ATIS 135.575
CLINC DEL 124.75
DENVER CLNC DEL 124.75
(When tower closed)
GND.CON 121.8
EAGLE TOWER * 119.8
DENVER CENTER 128.65 282.2



NOTE: On departure rapidly rising terrain and trees within 1.5 miles west of the airport and within 0.25 miles south of the airport.
NOTE: RNAV 1.
NOTE: GPS required.
NOTE: Obstacle protection not ensured for turns delayed beyond DER.
NOTE: Do not exceed 210K until established direct COPER.

TAKEOFF MINIMUMS
Rwy 7: NA - Terrain
Rwy 25: 800-2 with a minimum climb of 740', per NM to 10200.

SW-1, 22 FEB 2024 to 21 MAR 2024