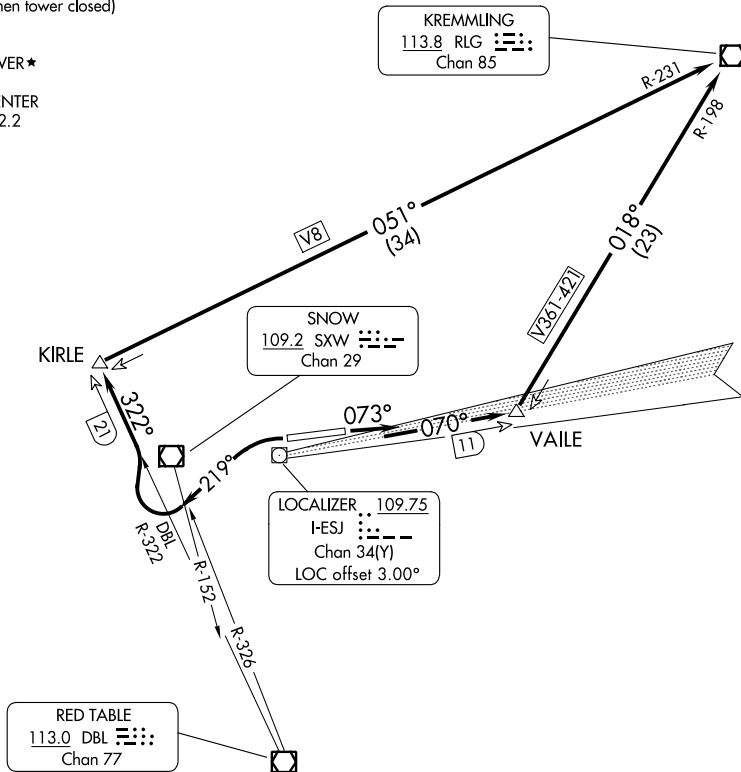


ATIS
135.575
CLNC DEL
124.75
DENVER CLNC DEL
124.75 (When tower closed)
GND CON
121.8
EAGLE TOWER ★
119.8
DENVER CENTER
128.65 282.2



SW-1, 22 FEB 2024 to 21 MAR 2024

SW-1, 22 FEB 2024 to 21 MAR 2024

TAKEOFF MINIMUMS

Rwy 7: Standard with minimum climb of 580' per NM to 12000.

Rwy 25: Standard with minimum climb of 815' per NM to 9200.

NOTE: Chart not to scale.



DEPARTURE ROUTE DESCRIPTION

TAKEOFF RUNWAY 7: Climb heading 073° and I-ESJ east course to VAILE INT/I-ESJ 11 DME then left turn on RLG R-198 to RLG VOR/DME.

TAKEOFF RUNWAY 25: Climbing left turn heading 219°, until crossing SXW R-152 or DBL R-326, then turn right on DBL R-322 to KIRLE INT/DBL 21 DME then turn right on RLG R-231 to RLG VOR/DME.