

| | | |
|-------------|----------|-------------|
| APP CRS | Rwy Idg | 8000 |
| 253° | TDZE | 6540 |
| | Apt Elev | 6547 |


RNAV (RNP) X RWY 25

EAGLE COUNTY RGNL (EGE)

RNP AR APCH-GPS, RF, MIN RNP 0.13. Authorization required. Missed approach requires RNP <1.00.

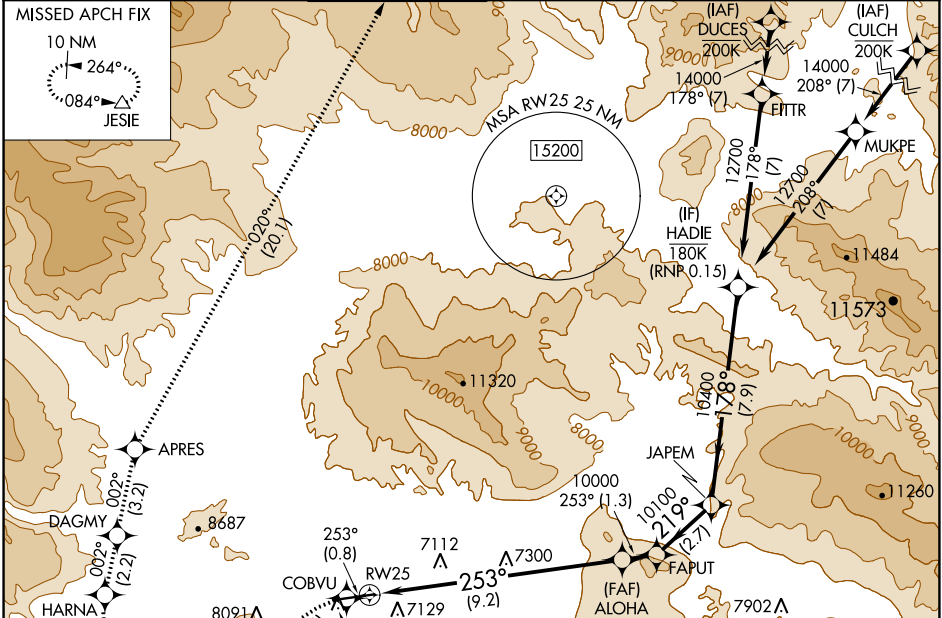
When local climeter setting not received, procedure NA. For uncompensated Baro-VNAV systems, procedure NA below -27°C or above 33°C. For inop ALS increase RNP 0.13 all visibilities to 1% SM.

MALSR

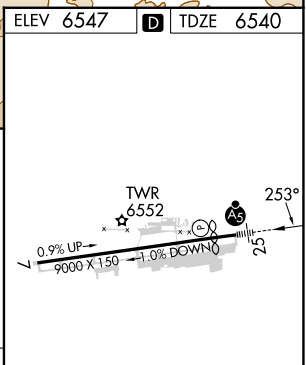
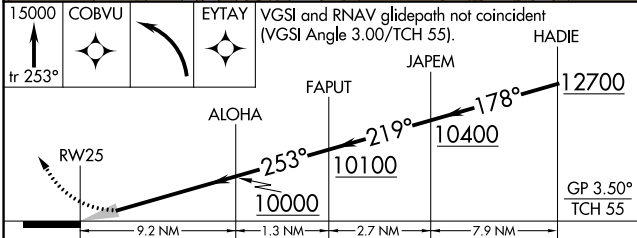


MISSED APPROACH: (Do not exceed 185K until HARNA) Climb to 15000 on the RNAV missed approach route to JESIE and hold.
*Missed approach requires minimum climb of 269 feet per NM to 8700.

| | | | | | |
|----------------|---------------------|-----------------------|--------------|---------------|--------------------------------------|
| ATIS | DENVER CENTER | EAGLE TOWER * | GND CON | CLNC DEL | DENVER CLNC DEL |
| 135.575 | 128.65 282.2 | 119.8 (CTAF) 0 | 121.8 | 124.75 | 124.75 (When tower closed) |



| | | |
|-----------|----------|-----------|
| ELEV 6547 | D | TDZE 6540 |
|-----------|----------|-----------|



| | | | | |
|--------------|----|------------|-----------------|---|
| CATEGORY | A | B | C | D |
| RNP 0.13 DA* | NA | 6937-5/8 | 397 (400-5%) | |
| RNP 0.13 DA | NA | 7204-1 1/2 | 664 (700-1 1/2) | |

AUTHORIZATION REQUIRED

HIRL Rwy 7-25 **0**
REL Rwy 7 **0**

SW-1, 22 FEB 2024 to 21 MAR 2024

SW-1, 22 FEB 2024 to 21 MAR 2024