

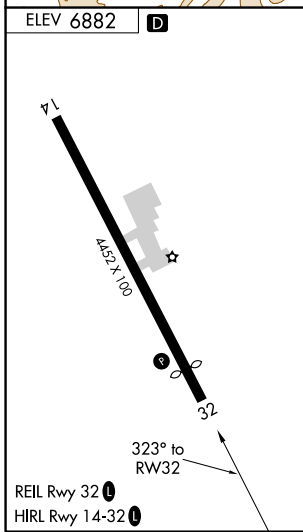
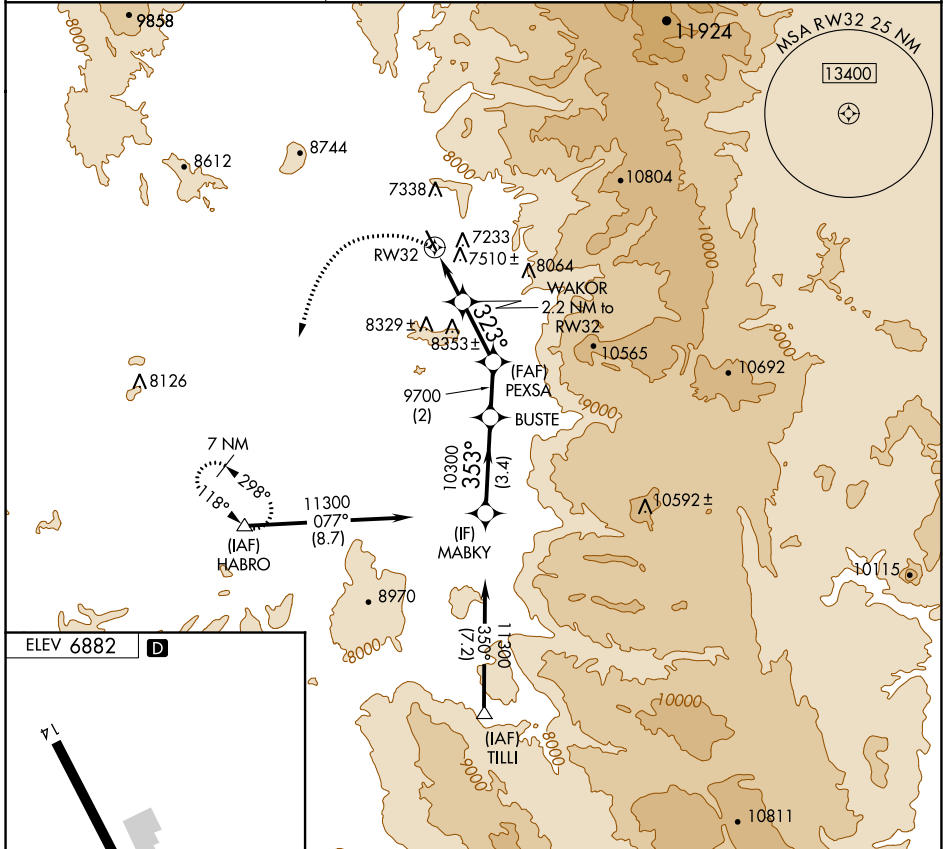
APP CRS <b>323°</b>	Rwy Idg TDZE Apt Elev	<b>N/A</b> <b>N/A</b> <b>6882</b>
------------------------	-----------------------------	---

# RNAV (GPS)-E

STEAMBOAT SPRINGS/BOB ADAMS FLD (SBS)

<p><b>▼</b> Circling NA northeast of Rwy 14-32.  <b>▲</b> NA  <b>☒</b> -26°C</p>	<p>DME/DME RNP- 0.3 NA.                  When local altimeter setting not received, use Yampa Valley altimeter setting and increase all MDA 80 feet.</p>	<p>MISSED APPROACH: Climbing left turn to 11300 direct HABRO and hold, continue climb-in-hold to 11300.</p>
--	--	---

AWOS-3 <b>118.325</b>	DENVER CENTER <b>120.475 235.975</b>	UNICOM <b>122.8 (CTAF) 0</b>
--------------------------	---	---------------------------------



11300	HABRO	VGSI and descent angles not coincident (VGSI Angle 4.00/TCH 40).	MABKY
			BUSTE
	WAKOR 2.2 NM to RW32	PEXSA	11300
	RW32	9700	10300
	7.75° TCH 40	323°	353°
	2.2 NM	2.4 NM	3.4 NM
CATEGORY	A	B	C
<b>☑</b> CIRCLING	8140-1¼ 1258 (1300-1¼)	8140-1½ 1258 (1300-1½)	NA

SW-1, 22 FEB 2024 to 21 MAR 2024

SW-1, 22 FEB 2024 to 21 MAR 2024