

VOR/DME BQZ <b>112.2</b> Chan 59	APP CRS <b>352°</b>	Rwy Idg TDZE Apt Elev <b>6882</b>	<b>N/A</b> <b>N/A</b> <b>6882</b>
--	------------------------	--	---

# VOR/DME-C

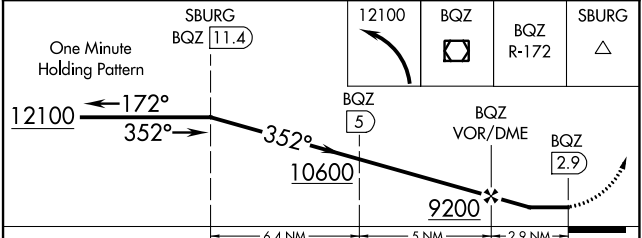
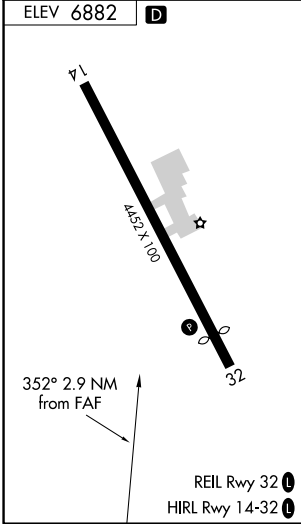
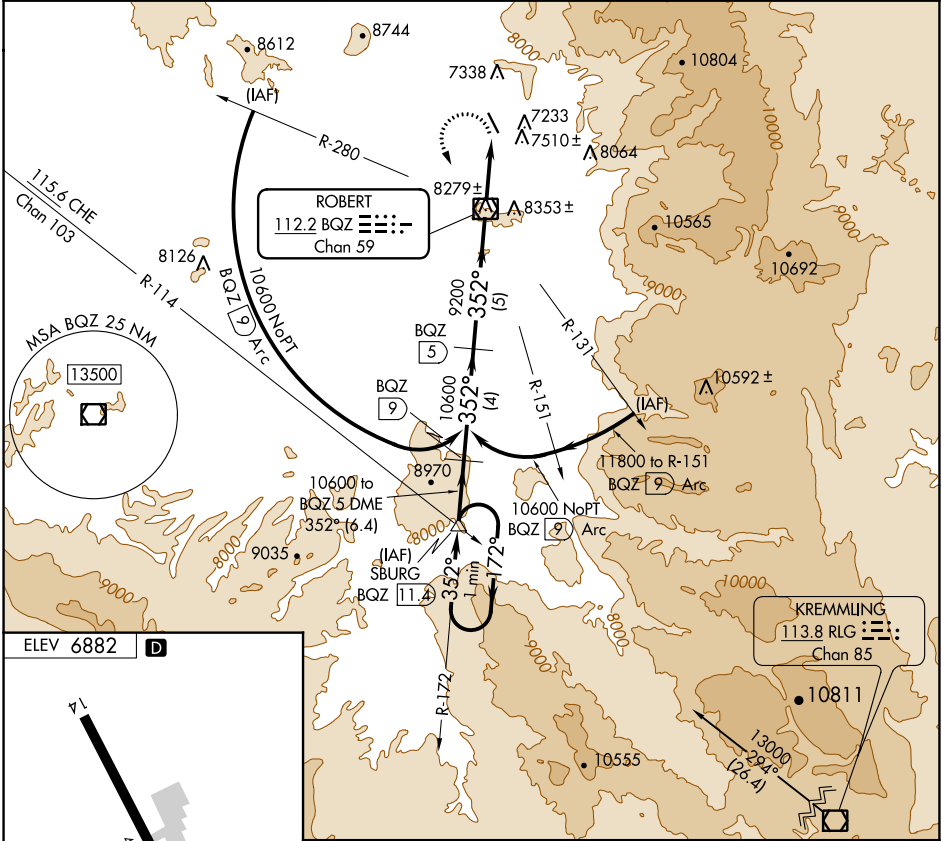
STEAMBOAT SPRINGS/BOB ADAMS FLD (SBS)

**⚠** When local altimeter setting not received, use Yampa Valley altimeter setting and increase all MDA 80 feet. Procedure NA at night. Circling NA northeast of Rwy 14-32.

**❄** -26°C

**MISSED APPROACH:** Climbing left turn to 12100 direct BQZ VOR/DME then on BQZ VOR/DME R-172 to SBURG INT/BQZ 11.4 DME and hold.

AWOS-3 <b>118.325</b>	DENVER CENTER <b>120.475 235.975</b>	UNICOM <b>122.8 (CTAF)</b> <b>📻</b>
--------------------------	---	--



CATEGORY	A	B	C	D
<b>📻</b> CIRCLING	8140-1¼ 1258 (1300-1¼)	8140-1½ 1258 (1300-1½)	NA	

SW-1, 22 FEB 2024 to 21 MAR 2024

SW-1, 22 FEB 2024 to 21 MAR 2024