

WAAS CH <b>70522</b> <b>W21A</b>	APP CRS <b>213°</b>	Rwy Idg TDZE Apt Elev	<b>5001</b> <b>718</b> <b>718</b>
--	------------------------	-----------------------------	---

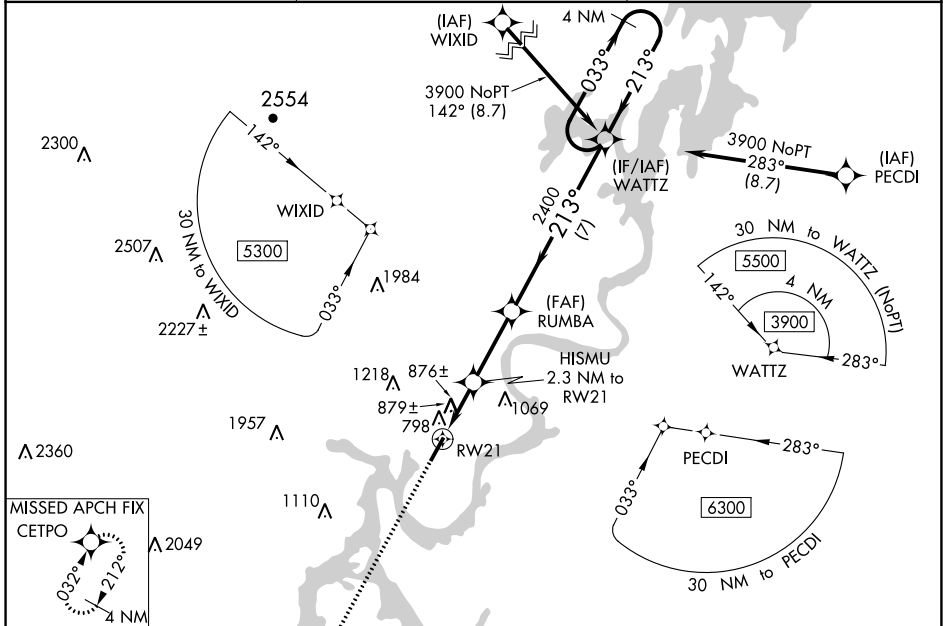
# RNAV (GPS) RWY 21

MARK ANTON (2AØ)

**⚠** Baro-VNAV NA when using Chattanooga altimeter setting. For uncompensated Baro-VNAV systems, LNAV/VNAV NA below -16°C (4°F) or above 39°C (102°F). DME/DME RNP-0.3 NA. When VGSI inop, Straight-in/Circling Rwy 21 NA at night. When local altimeter setting not received, use Chattanooga altimeter setting: increase LPV DA to 1085 feet, LNAV/VNAV DA to 1249 feet, and visibility LPV and LNAV/VNAV all Cats ¼ SM; increase all MDA 80 feet and visibility LNAV Cat C/D ¼ SM and Circling Cat C ½ SM. Rwy 21 helicopter visibility reduction below 1 SM NA.

**MISSED APPROACH:** Climb to 3900 direct CETPO and hold, continue climb-in-hold to 3900.

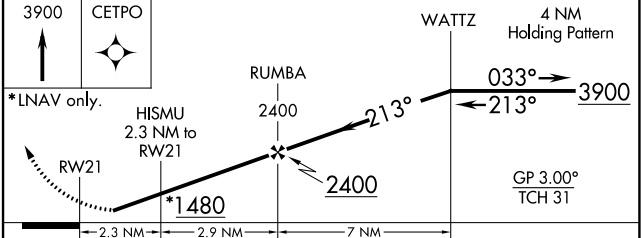
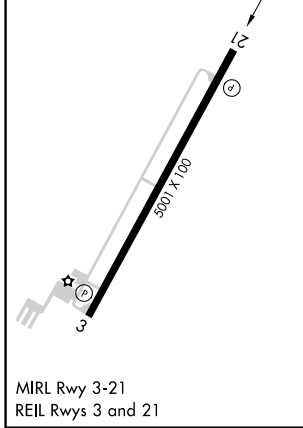
AWOS-3 <b>135.075</b>	CHATTANOOGA APP CON * <b>125.1 379.1</b>	UNICOM <b>123.0</b> (CTAF)
--------------------------	---	-------------------------------



SE-1, 22 FEB 2024 to 21 MAR 2024

SE-1, 22 FEB 2024 to 21 MAR 2024

ELEV <b>718</b>	TDZE <b>718</b>
-----------------	-----------------



CATEGORY	A	B	C	D
LPV DA		1010-1	292 (300-1)	
LNAV/VNAV DA		1174-1½	456 (500-1½)	
LNAV MDA	1140-1	422 (500-1)	1140-1¼	422 (500-1¼)
CIRCLING	1380-1 662 (700-1)	1420-1 702 (800-1)	1520-2¼ 802 (900-2¼)	1620-3 902 (1000-3)