

WAAS CH 86922 W03A	APP CRS 033°	Rwy Idg TDZE 714 Apt Elev 718	5001
--	------------------------	---	-------------

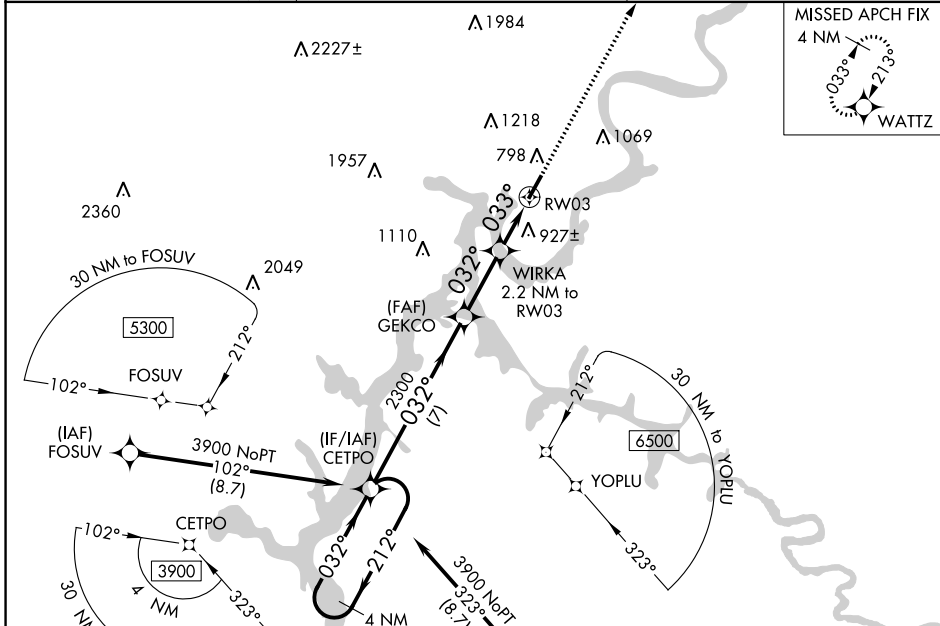
RNAV (GPS) RWY 3

MARK ANTON (2A)()

▼ Baro-VNAV NA when using Chattanooga altimeter setting. For uncompensated Baro-VNAV systems, LNAV/VNAV NA below -16°C (4°F) or above 39°C (102°F). DME/DME RNP-0.3 NA. VDP NA with Chattanooga altimeter setting. When VGSi inop, Circling Rwy 21 NA at night. When local altimeter setting not received, use Chattanooga altimeter setting; increase LPV DA to 1039 feet, LNAV/VNAV DA to 1288 feet, and visibility LPV and LNAV/VNAV all Cts ½ SM; increase all MDA 80 feet and visibility LNAV Cat C/D ¼ SM and Circling Cat C ½ SM. Rwy 3 helicopter visibility reduction below ¾ SM NA. Rwy 21 helicopter visibility reduction below 1 SM NA.

MISSED APPROACH:
Climb to 3900 direct WATTZ and hold.

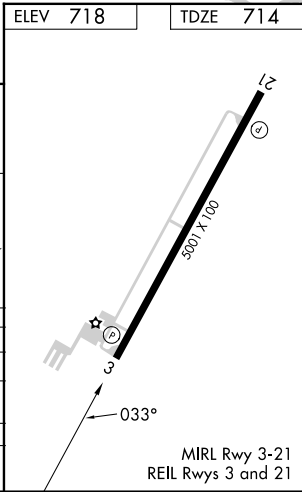
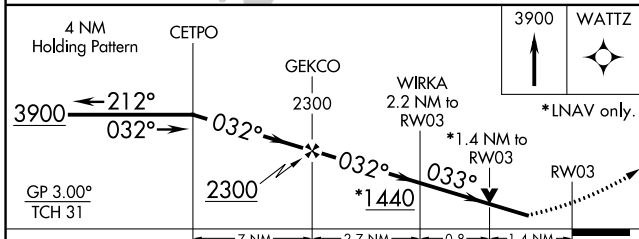
AWOS-3 135.075	CHATTANOOGA APP CON ★ 125.1 379.1	UNICOM 123.0 (CTAF)
--------------------------	---	-------------------------------



SE-1, 22 FEB 2024 to 21 MAR 2024

SE-1, 22 FEB 2024 to 21 MAR 2024

ELEV 718	TDZE 714
----------	----------



CATEGORY	A	B	C	D
LPV DA		964-7/8	250 (300-7/8)	
LNAV/VNAV DA		1213-13/4	499 (500-13/4)	
LNAV MDA	1180-1	466 (500-1)	1180-13/8	466 (500-13/8)
CIRCLING	1380-1 662 (700-1)	1420-1 702 (800-1)	1520-21/4 802 (900-21/4)	1620-3 902 (1000-3)