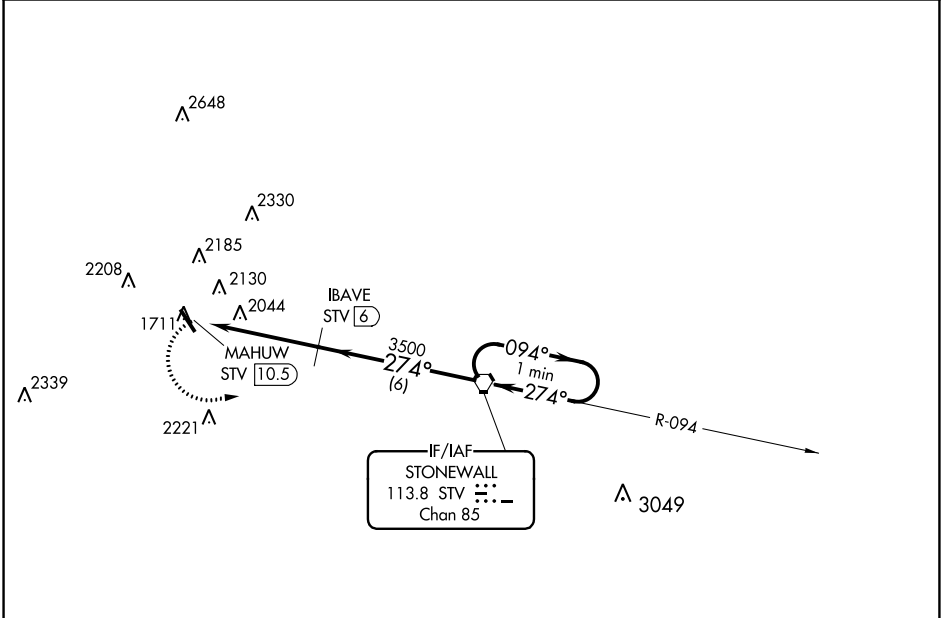


VORTAC STV 113.8 Chan 85	APP CRS 274°	Rwy Idg TDZE Apt Elev N/A N/A 1695
--	------------------------	--

VOR/DME-A
GILLESPIE COUNTY (T82)

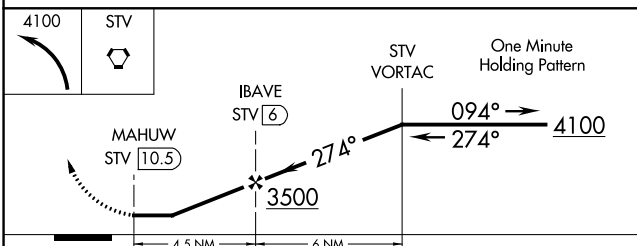
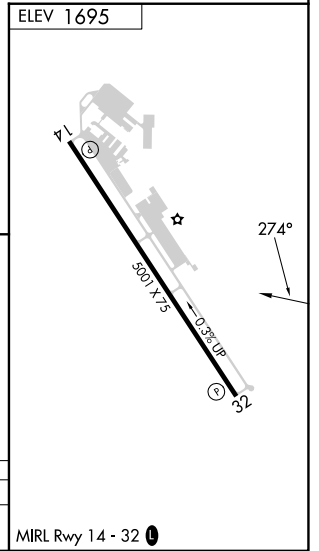
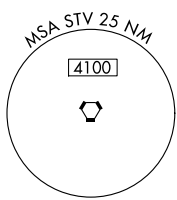
<p>▼ When local altimeter setting not received, use Kerrville altimeter setting and increase MDA 60 feet and Cat C visibility ¼ mile.</p> <p>▲</p>	<p>MISSED APPROACH: Climbing left turn to 4100 direct STV VORTAC and hold.</p>
--	--

<p>AWOS-3 120.0</p>	<p>HOUSTON CENTER 134.2 307.3</p>	<p>GCO 121.725</p>	<p>UNICOM 122.7 (CTAF) 0</p>
--------------------------------	--	-------------------------------	---



SC-3, 22 FEB 2024 to 21 MAR 2024

SC-3, 22 FEB 2024 to 21 MAR 2024



CATEGORY	A	B	C	D
CIRCLING	2440-1 745 (800-1)	2440-1¼ 745 (800-1¼)	2520-2½ 825 (900-2½)	NA

MRL Rwy 14 - 32 0