

WAAS CH <b>50416</b> <b>W02A</b>	APP CRS <b>020°</b>	Rwy Idg <b>6100</b> TDZE <b>3786</b> Apt Elev <b>3788</b>
--	------------------------	---

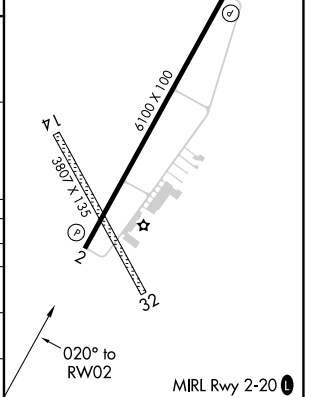
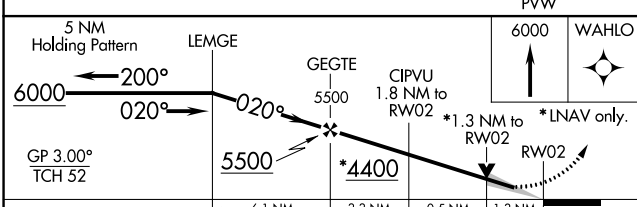
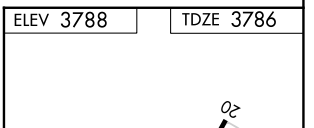
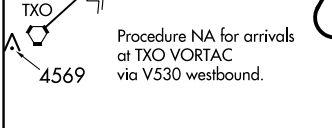
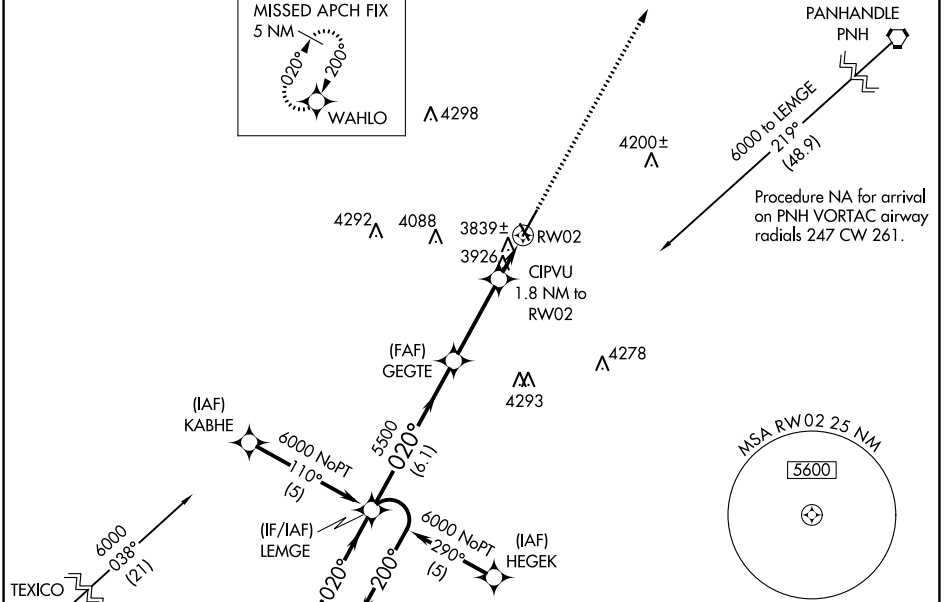
# RNAV (GPS) RWY 2

HEREFORD MUNI (HR.X)

▼ For uncompensated Baro-VNAV systems, LNAV/VNAV NA below -22°C (-7°F) or above 41°C (105°F).  
 ▲ DME/DME RNP-0.3 NA. When local altimeter setting not received, use Rick Husband Amarillo Intl altimeter setting: Increase LPV DA to 4098 feet and all Cats visibility ¼ SM, increase LNAV/VNAV DA to 4238 feet and all Cats visibility ¼ SM, increase all MDA 120 feet; increase LNAV Cats C/D visibility ¼ SM, increase Circling Cat C visibility ½ SM and Cat D visibility ¼ SM. Baro-VNAV NA when using Rick Husband Amarillo Intl altimeter setting. VDP NA with Rick Husband Amarillo Intl altimeter setting.

MISSED APPROACH:  
Climb to 6000 direct WAHLO and hold.

AWOS-3 <b>118.05</b>	AMARILLO APP CON ★ <b>119.5 307.0</b>	UNICOM <b>122.8 (CTAF) 0</b>
-------------------------	--	---------------------------------



CATEGORY	A	B	C	D
LPV DA		3986-3/4	200 (200-3/4)	
LNAV/DA VNAV		4126-1 1/4	340 (400-1 1/4)	
LNAV MDA	4240-1	454 (500-1)	4240-1 1/4 454 (500-1 1/4)	4240-1 1/2 454 (500-1 1/2)
CIRCLING	4280-1	492 (500-1)	4440-1 3/4 652 (700-1 3/4)	4620-2 3/4 832 (900-2 3/4)

SC-2, 22 FEB 2024 to 21 MAR 2024

SC-2, 22 FEB 2024 to 21 MAR 2024