

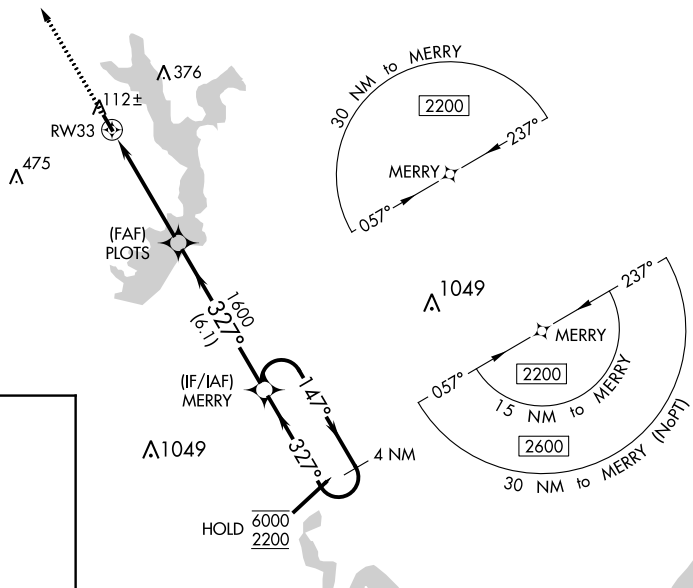
APP CRS 327°	Rwy Idg TDZE Apt Elev	N/A N/A 61
------------------------	-----------------------------	---------------------------------------

RNAV (GPS)-B

JACKSON COUNTY (26R)

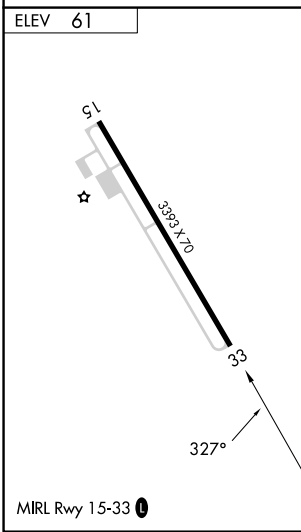
RNP APCH. ▼ Use Victoria altimeter setting; when not received, use Port Lavaca altimeter setting. ▲ NA	MISSED APPROACH: Climb to 2000 direct ZEDNA and hold.
--	---

VCT ASOS 119.025	HOUSTON CENTER 135.05 353.6	UNICOM 122.8 (CTAF) 0
----------------------------	---------------------------------------	---------------------------------



SC-5, 22 FEB 2024 to 21 MAR 2024

SC-5, 22 FEB 2024 to 21 MAR 2024



2000	ZEDNA	MERRY 4 NM Holding Pattern	
PLOTS		147° → 6000	← 327° 2200
RW33		1600	
TCH 40		3.00°	
CATEGORY		A	B
CIRCLING		640-1 579 (600-1)	NA