

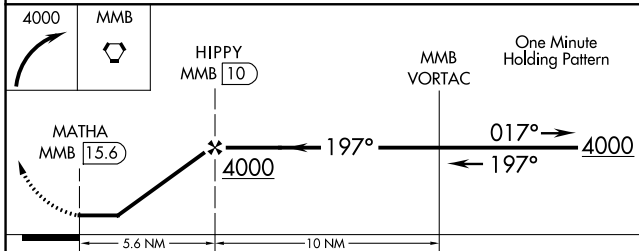
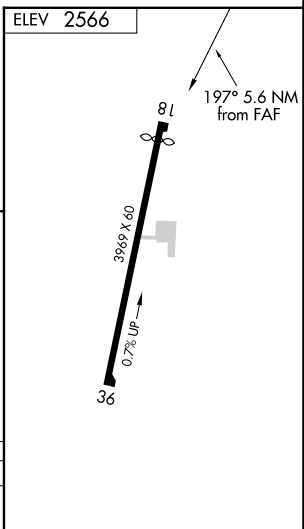
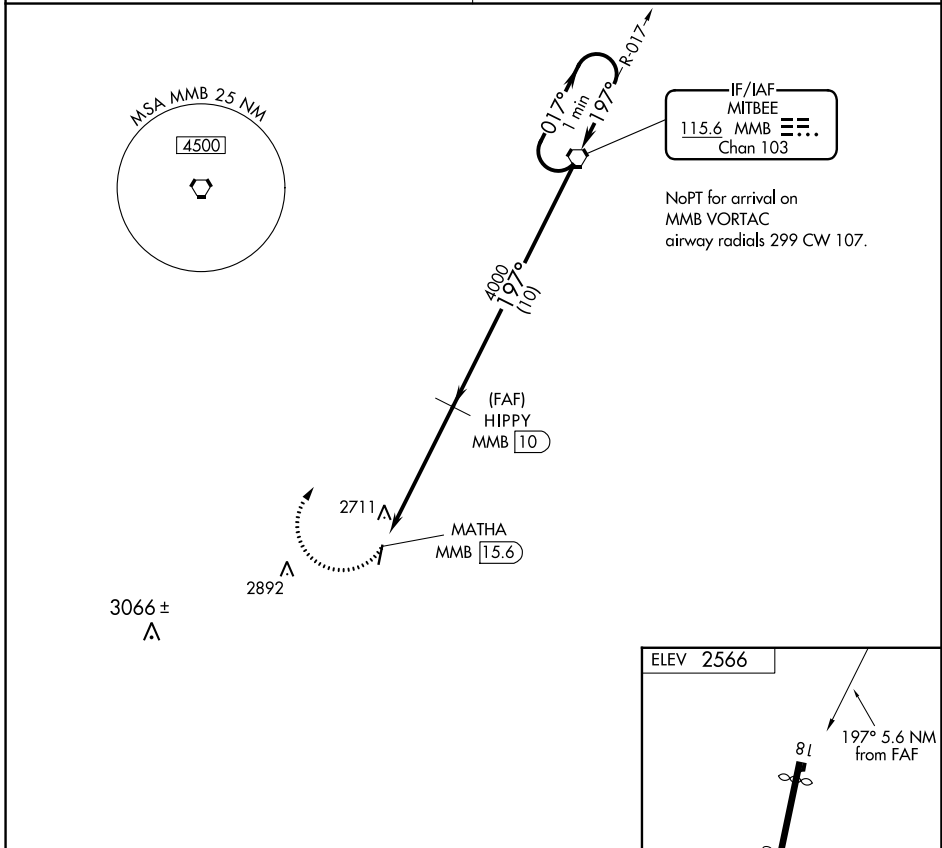
VORTAC MMB 115.6 Chan 103	APP CRS 197°	Rwy Idg TDZE Apt Elev	N/A N/A 2566
---	------------------------	-----------------------------	---

VOR/DME-A
HIGGINS/LIPSCOMB COUNTY (1X1)

NA Procedure NA at night. Use Canadian altimeter setting; when not received, use Gage, OK altimeter setting and increase all MDA 20 feet.

MISSED APPROACH: Climbing right turn to 4000 direct MMB VORTAC and hold.

KANSAS CITY CENTER 126.95 379.2	CTAF 122.9 0
---	------------------------



CATEGORY	A	B	C	D
CIRCLING	3140-1	574 (600-1)	3140-1½ 574 (600-1½)	NA

SC-2, 22 FEB 2024 to 21 MAR 2024

SC-2, 22 FEB 2024 to 21 MAR 2024