

WAAS CH 72702 W32A	APP CRS 324°	Rwy Idg TDZE Apt Elev	7000 4304 4308
--	------------------------	-----------------------------	---

RNAV (GPS) RWY 32

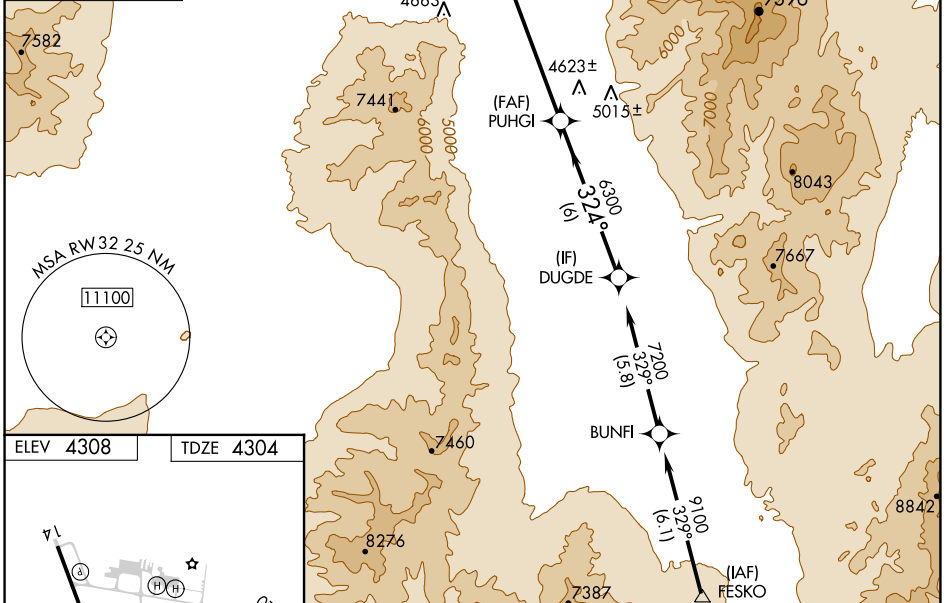
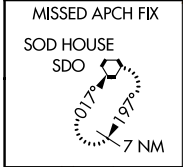
WINNEMUCCA MUNI (WMC)

RNP APCH.

⚠ Rwy 32 helicopter visibility reduction below 3/4 SM NA. VDP NA when using Battle Mountain altimeter setting. When local altimeter setting not received, use Battle Mountain altimeter setting and increase all DAs/MDAs 140 feet.

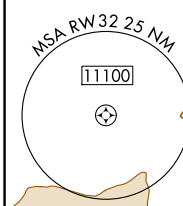
MISSED APPROACH: Climb to 10000 direct EXATY and on track 326° to SDO VORTAC and hold.

ASOS 120.175	SALT LAKE CITY CENTER 132.25 338.35	UNICOM 122.8 (CTAF) 0
------------------------	---	---------------------------------

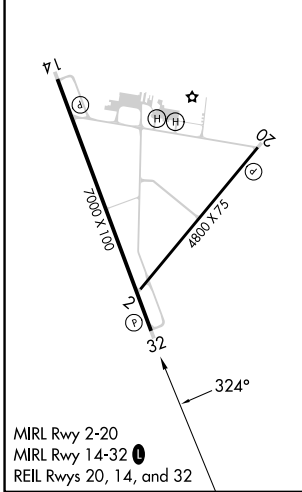


SW-4, 22 FEB 2024 to 21 MAR 2024

SW-4, 22 FEB 2024 to 21 MAR 2024



ELEV 4308	TDZE 4304
-----------	-----------



10000	EXATY	tr 326°	SDO	VGSi And RNAV glidepath not coincident (VGSi Angle 3.00/TCH 40).			
*LNAV only			*1.7 NM to RW32		DUGDE		7200
RW32			PUHGI		6300		GP 3.00° TCH 45
1.7 NM			4.3 NM		6 NM		
CATEGORY	A	B	C	D			
LPV DA	4554-3/4			250 (300-3/4)			
LNAV MDA	4880-1	576 (600-1)	4880-1 1/2	4880-1 3/4	576 (600-1 1/2) 576 (600-1 3/4)		