

# COPTER RNAV (GPS) X RWY 31

GRANT COUNTY (W99)

APP CRS	Rwy Idg	<b>5000</b>
<b>310°</b>	TDZE	<b>957</b>
	Apt Elev	<b>963</b>

RNP APCH.

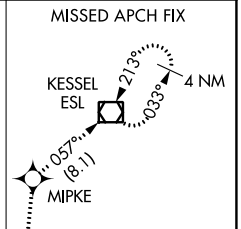
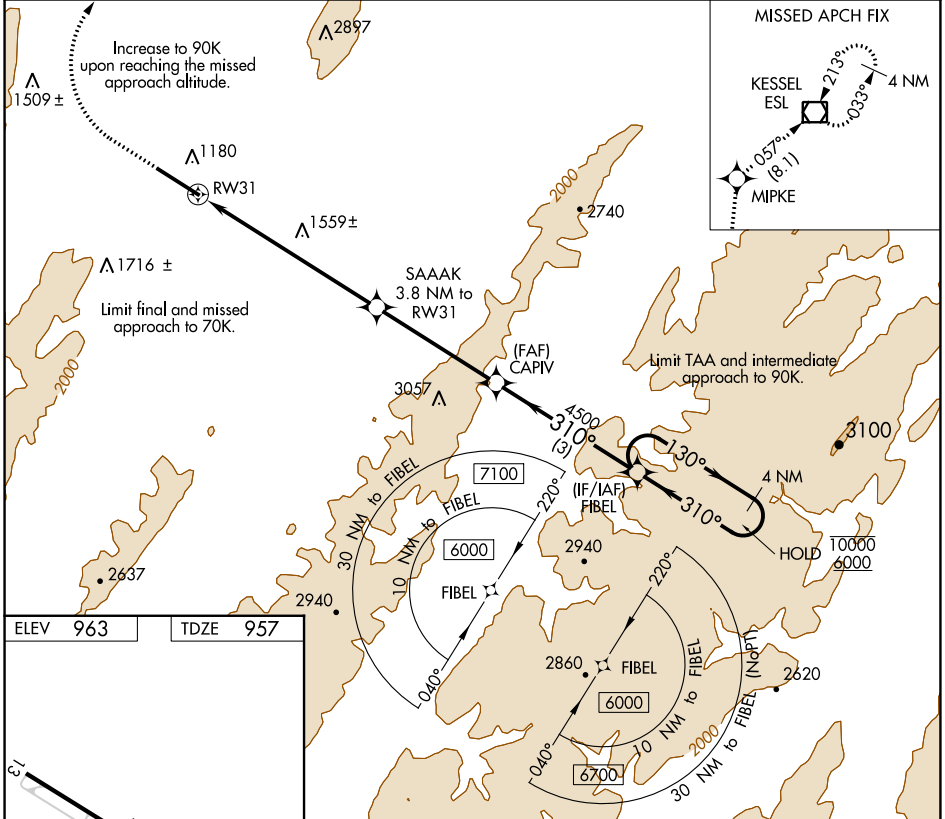
**NA** When local altimeter setting not received, procedure NA.  
**-8°C**

MISSED APPROACH: Climb to 1380 then climbing right turn to 5000 direct MIPKE and on track 057° to ESL VOR/DME and hold.

AWOS-3  
**124.475**

WASHINGTON CENTER  
**133.55 322.55**

UNICOM  
**122.8 (CTAF)**



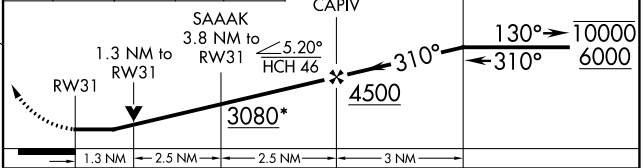
NE-4, 22 FEB 2024 to 21 MAR 2024

NE-4, 22 FEB 2024 to 21 MAR 2024

ELEV	963	TDZE	957
------	-----	------	-----



1380	5000	MIPKE	tr 057°	ESL	VGSI and descent angles not coincident (VGSI Angle 6.50/TCH 46).
					FIBEL Holding Pattern 4 NM



REIL Rws 13 and 31	<b>1</b>
MIRL Rwy 13-31	<b>1</b>
CATEGORY	COPTER
LNAV MDA	1880- <sup>3</sup> / <sub>4</sub> 923 (1000- <sup>3</sup> / <sub>4</sub> )

# COPTER RNAV (GPS) X RWY 31