

WAAS CH 50543 W31B	APP CRS 295°	Rwy Idg TDZE Apt Elev	5000 957 963
--	------------------------	-----------------------------	---

RNAV (GPS) Z RWY 31

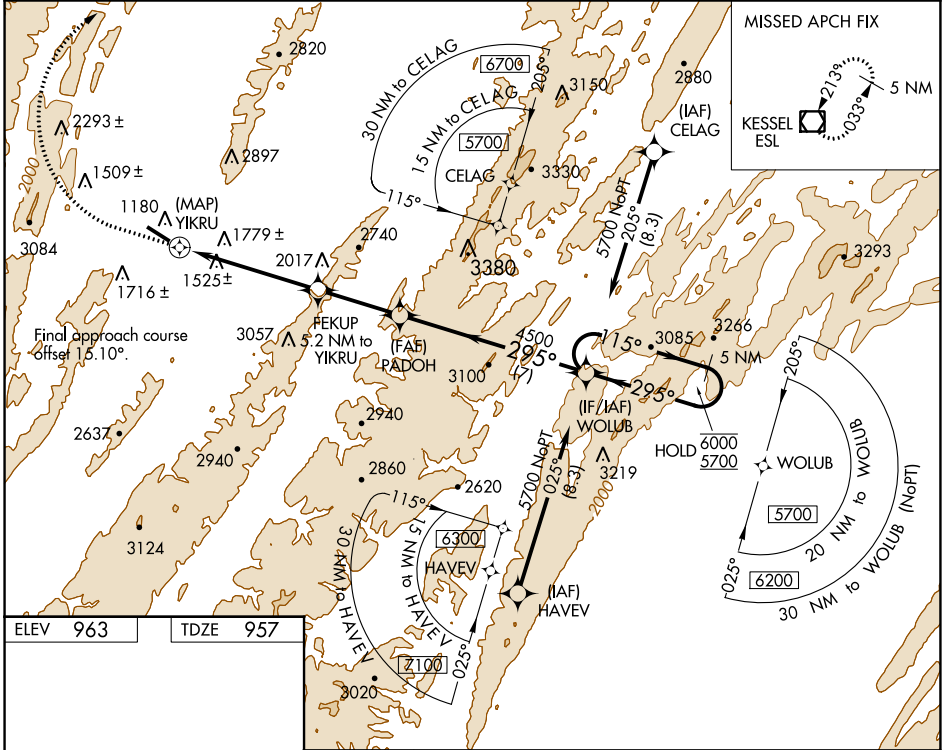
GRANT COUNTY (W99)

RNP APCH - GPS.

▼ Rwy 31 helicopter visibility reduction below 3/4 SM NA.
 ▲ When local altimeter setting not received, procedure NA.
 ☁ -8°C

MISSED APPROACH: Climb to 2200 then climbing right turn to 5000 direct ESL VOR/DME and hold.
 *Missed approach requires minimum climb of 410 feet per NM to 3300, if unable to meet climb gradient, see RNAV (GPS) Y Rwy 31.

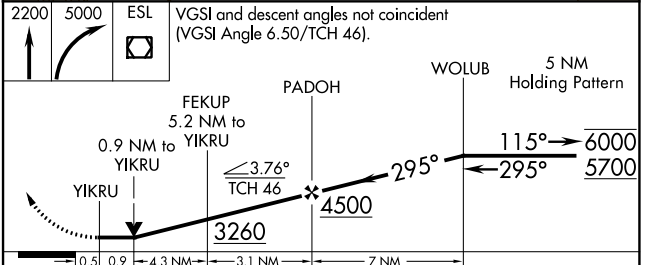
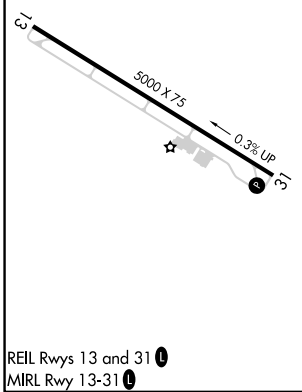
AWOS-3 124.475	WASHINGTON CENTER 133.55 322.55	UNICOM 122.8 (CTAF)
--------------------------	---	-------------------------------



NE-4, 22 FEB 2024 to 21 MAR 2024

NE-4, 22 FEB 2024 to 21 MAR 2024

ELEV 963	TDZE 957
----------	----------



CATEGORY	A	B	C	D
LP MDA*	2020-1¼ 1063 (1100-114)	2020-1½ 1063 (1100-1½)		NA
LNAV MDA*	2120-1¼ 1163 (1200-114)	2120-1½ 1163 (1200-1½)		NA